

Figure 2-1

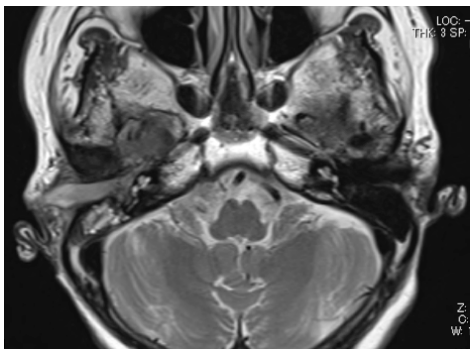


Figure 2-2

Figure 2-1, 2-2 : In the right external auditory meatus, a 28×10 mm T1WI low signal (Fig 2-1) and a T2WI high signal showed a non-uniform tumorous lesion with contrast effect (Fig 2-2).

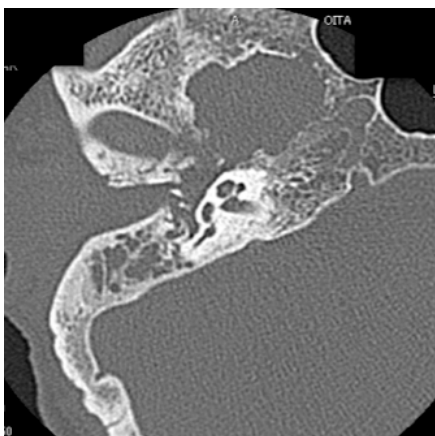


Figure 2-3 : A mass lesion of 18×25 mm was observed from the base of the middle fossa to the external auditory meatus to open the foramen ovale. Bone destruction of the foramen ovale, spinous foramen, and carotid canal was also associated.