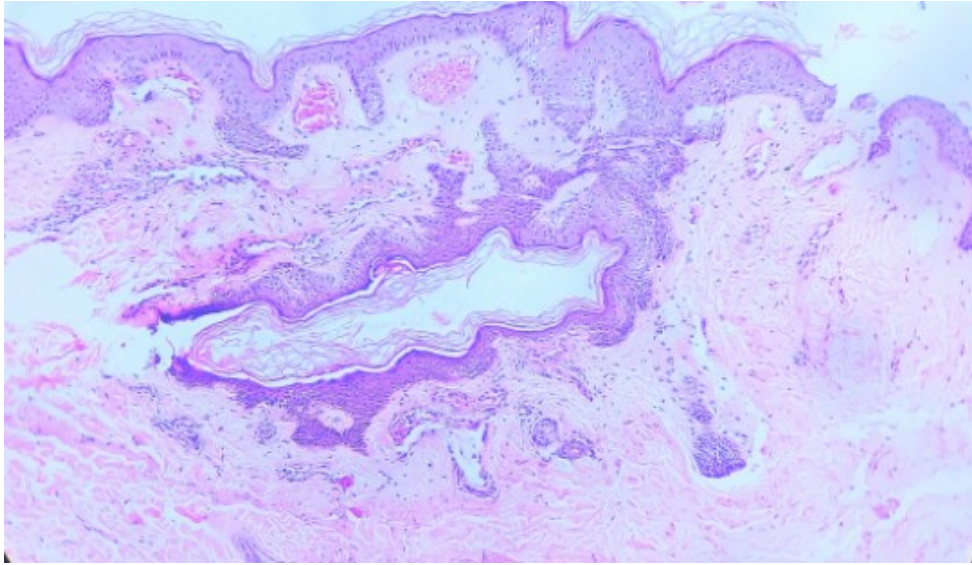
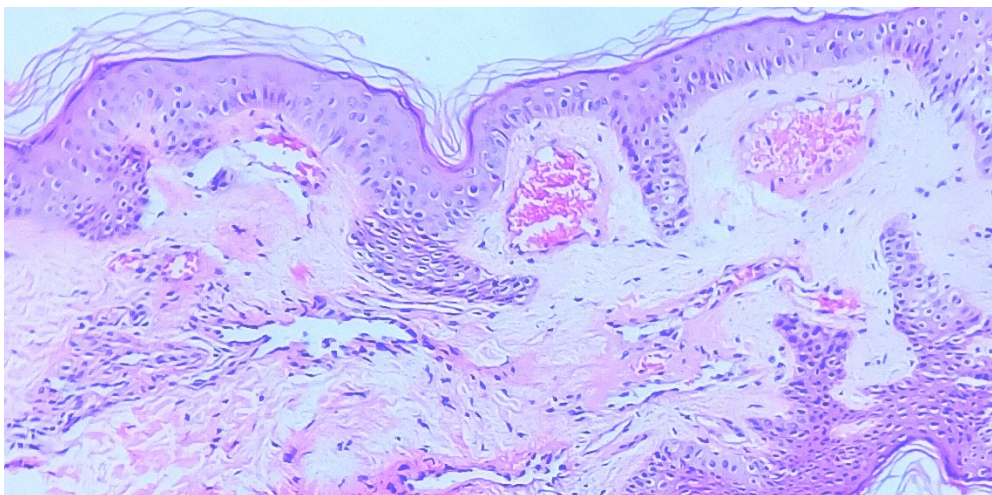




[ Figure 1. Multiple scattered and confluent punctate erythematous to violaceous macules over the left side of the abdomen in T8-T10 dermatomal distribution ]



[Figure.2a. Section shows epidermis and dermis with papillomatosis and focal elongation of rete ridges. Hematoxylin and eosin stain (original magnification 10X)]



[Figure 2b. Basket weaves hyperkeratosis, papillomatosis, hypogranulosis and pigmented basal layer. Papillary dermis showed few ectatic congested thin walled blood vessels. Few areas showed downward growth of the rete ridges between these blood vessels. Hematoxylin and eosin stain (original magnification 40X).]