

Figure-1. Loco-regional free survival curves of three groups

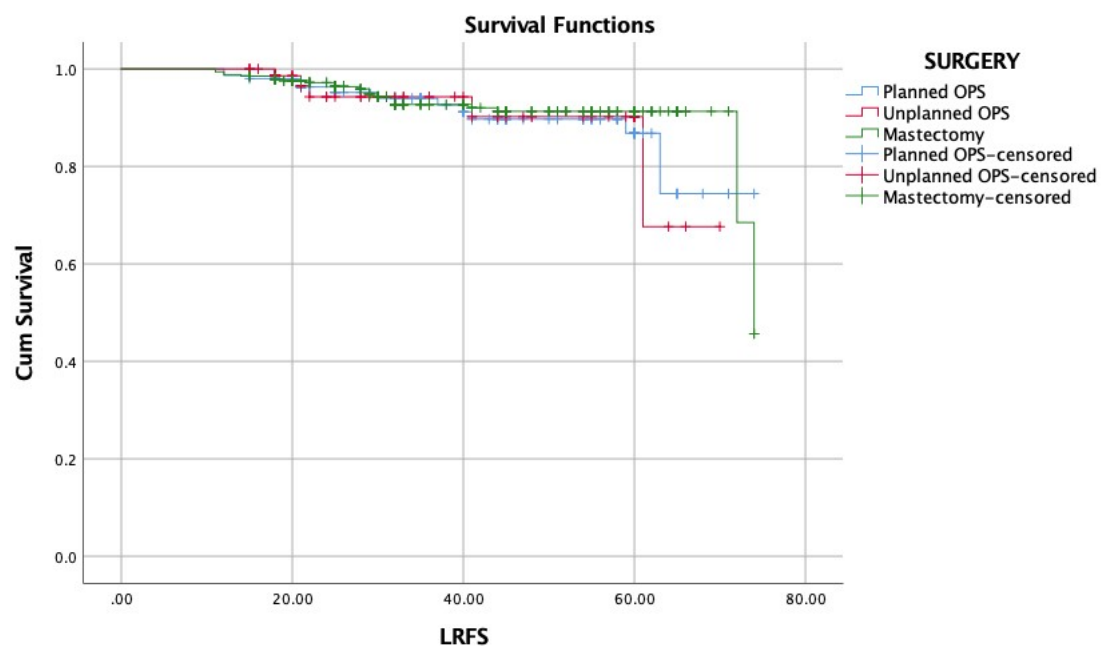




Figure 2. A. Tumor close to the areola in the upper outer quadrant of the left breast, skin shrinkage, and minimal edema (pre-NAC image). B. Structural distortion and focal asymmetric density in the post-NAC tumor bed. C. Wire-guided marking of this area D. Complete excision of radiological residual area on specimen radiography.



Figure 3. Postoperative image of the patient.