

Figure 1. Axial (top) and coronal (bottom) views of patient 1. Findings notable for large, dilated appendix with mucosal enhancement. Pathology post laparoscopic appendectomy revealed mucinous adenoma.

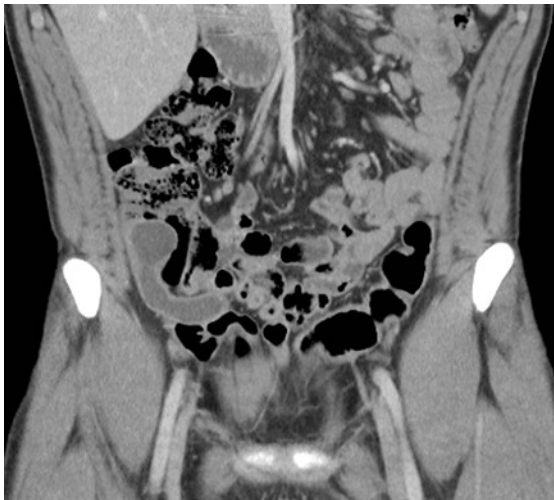


Figure 2. Axial (top) and coronal (bottom) views of patient 2. Findings notable for enlarged appendix with inflammatory stranding throughout the right lower quadrant sparing the cecum and terminal ileum.



Figure 3. Axial (top) and coronal (middle) views of patient 3. Findings notable for enlarged appendix is with a 7 mm stone likely in the distal lumen and a 4.0 x 2.7 cm phlegmonous region intimately involved with the distal appendix. Follow up axial image (bottom) on day + 195 show resolution of inflammation and appendicolith.

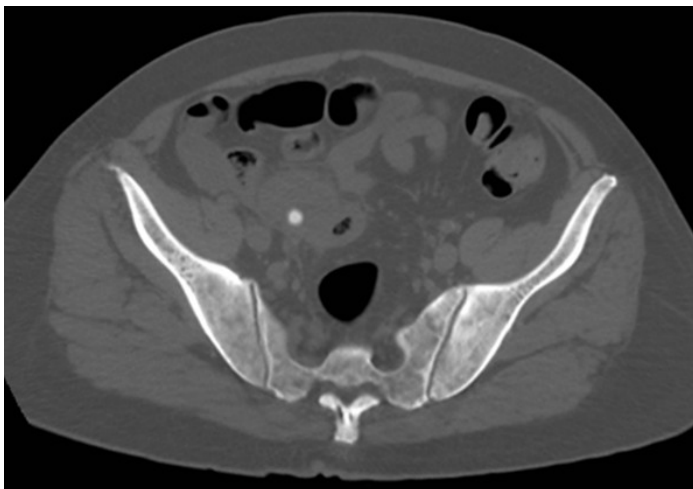




Figure 4. Axial (top) and coronal (bottom) views of patient 4. Findings notable for enlarged appendix with mesenteric fat stranding and terminal ileitis.



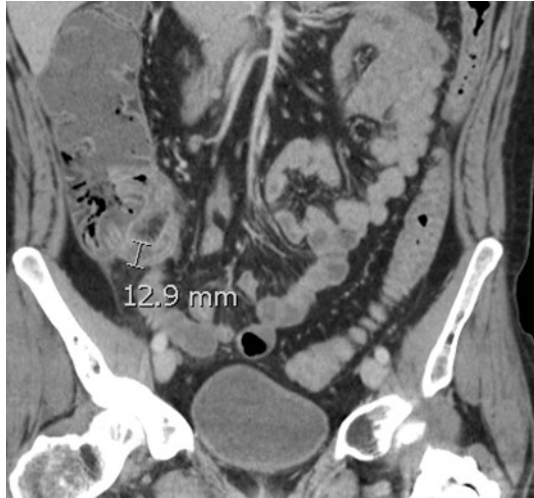


Figure 5. Axial (top) and coronal (bottom) views of patient 5. Findings notable for extensive small bowel and colonic mucosal hyperenhancement with wall thickening involving the descending and sigmoid colon with focal inflammation at the splenic flexure. Dilated fluid-filled appendix with mucosal hyperenhancement.

