

Mass cytometry-based identification of a unique T-cell signature predicting childhood allergic asthma

Short title: T-cell signature in paediatric AA

Key words:

allergic asthma, paediatric, clinical disease parameters, CyTOF, T-cell subpopulations

To the Editor,

Allergic asthma (AA) in childhood is characterized by a dominance of type 2 immunity driven by CD4⁺ T helper 2 (Th2) cells expressing the transcription factor (TF) GATA3 and inefficient counter-regulation by Tregs among other mechanisms.¹ However, a detailed analysis of T-cells associated with paediatric AA is still needed.

To identify T-cell phenotypes associating with paediatric AA, we applied a 42-antibody mass cytometry panel in combination with unsupervised computational analyses in a cohort of well-characterized 14 treatment-naïve AA and 9 healthy children (HC) from the CLARA/CLAUS study (Table S1,S2 Figure S1A).² Integrating information from 12 lineage-markers we identified seven major T- and NK-cell populations within peripheral blood mononuclear cells (PBMC) (Figure S1B,C) of which CD8⁺ T-cell abundance was reduced with underrepresented memory compartment in AA vs HC (Figure 1A,S1D,E).

Accordingly, the CD4⁺/CD8⁺ T-cell ratio was elevated in AA vs HC and positively correlated with blood eosinophil frequencies, a determinant of AA severity³, (Figure 1B,C). To address potential disease-associated changes within the CD4⁺ T-cell compartment, we selected 30 markers for subsequent clustering using FlowSOM algorithm. Two clusters, cluster_c6 and cluster_c30, were significantly expanded in AA vs HC (Figure 1D,E,S2A). Cluster_c6 represented Th2 cells (Figure 1F), since it expressed the Th2-specific TF GATA3 and

chemokine receptors CRTH2 and CCR4.⁴ It uniquely co-expressed TIGIT and ICOS, which was not reported in AA so far and could be specific for childhood, since *TIGIT* hypomethylation has been described only in paediatric AA.⁵ The frequency of the TIGIT⁺ICOS⁺Th2_cluster, correlated with eosinophilia in AA with additional allergic comorbidities and also with CD4/CD8 T-cell ratio in asthmatics having intermittent disease symptoms, while inversely in stable disease (Figure 1G,H), indicating its association with more symptomatic disease including allergic comorbidity linked to eosinophilia.

Cluster_c30 expressing markers characterizing naïve/resting Tregs (Figure S2B) matched the previously described CD45RA⁺FOXP3^{low} Treg fraction(Fr)-I,⁶ while eTregs represented Fr-II (CD45RA⁺FOXP3^{high}) and Fr-III (CD45RA⁺FOXP3^{low}) (Figure 1I). Accordingly, the frequencies of Fr-I were enriched in AA vs HC, while Fr-II and Fr-III were similar (Figure S2C). Cluster_c30 abundance correlated partially inversely with lung function, and significantly with memory CD8⁺ T-cell frequencies (Figure 1J,S2D), indicating its connection to lung function and CD8⁺ T-cell alterations. The abundances of Fr-I vs Fr-II correlated inversely (Figure 1K), consistent with the linear developmental model⁶, suggesting a differentiation-block from Fr-I towards Fr-II, and a possible altered eTreg compartment in paediatric AA.

Therefore, we next analyzed eTregs by FlowSOM clustering, which revealed underrepresented cluster_c2 and cluster_c10 in AA (Figure 2A,B,S2E). Considering a possible eTregs impairment and an overrepresentation of TIGIT⁺ICOS⁺Th2-cells, we asked if the two phenomena are connected. Indeed, the TIGIT⁺ICOS⁺ Th2/eTregs ratio was higher in children with AA versus HC, but failed to associate with eosinophilia (Figure 2C,D). In contrast, TIGIT⁺ICOS⁺ Th2-cell ratio to eTreg_c2 and eTreg_c10, correlated significantly suggesting a relation between their underrepresentation and TIGIT⁺ICOS⁺Th2-associated eosinophilia.

Thus, naïve/resting Tregs (cluster_c30) and eTregs are linked to two different pathological features of asthma, lung function and eosinophilia, respectively.

Next, we performed principal component analysis (PCA) based on significantly changed ratio and subset-frequencies, which separated AA from HC children at the first PC, indicating that the detected dysbalanced T-cell composition allows a discrimination between AA and HC (Figure 2E). Additionally, ROC analyses revealed a relation of resting/naïve Tregs (CD4_c30), eTreg_c2 and eTreg_c10 to the paediatric AA phenotype (sensitivity, true positive rate) (Figure 2F), further supporting the relevant involvement of the Treg dysbalance in childhood AA.

Summarizing, our approach identifies a unique T-cell signature of childhood AA and provides insights for pathophysiological involvement of dysbalanced Tregs, TIGIT⁺ICOS⁺ Th2 and memory CD8⁺ T-cells. This can be useful for immunomonitoring, immunomodulation and for further studies in childhood AA.

References

1. Krusche J, Basse S, Schaub B. Role of early life immune regulation in asthma development. *Semin Immunopathol* **42**, 29-42 (2020).
2. Krusche J, Twardziok M, Rehbach K, *et al.* TNF-alpha-induced protein 3 is a key player in childhood asthma development and environment-mediated protection. *J Allergy Clin Immunol* **144**, 1684-1696 e1612 (2019).
3. Price DB, Rigazio A, Campbell JD, *et al.* Blood eosinophil count and prospective annual asthma disease burden: a UK cohort study. *Lancet Respir Med* **3**, 849-858 (2015).
4. Nakayama T, Hirahara K, Onodera A, *et al.* Th2 Cells in Health and Disease. *Annu Rev Immunol* **35**, 53-84 (2017).
5. Yang IV, Pedersen BS, Liu A, *et al.* DNA methylation and childhood asthma in the inner city. *J Allergy Clin Immunol* **136**, 69-80 (2015).

6. Sakaguchi S, Mikami N, Wing JB, Tanaka A, Ichiyama K, Ohkura N. Regulatory T Cells and Human Disease. *Annu Rev Immunol* **38**, 541-566 (2020).

Hartmann Raifer^{1,2*}, Axel R. Schulz^{3*}, Johanna Theodorou^{4,5*}, Addi Romero¹, Andreas Böck⁴, Wilhelm Bertrams^{5,6}, Bernd T. Schmeck^{5,6}, Michael Lohoff¹, Hyun-Dong Chang^{3,7}, Bianca Schaub^{4,5 #}, Henrik E. Mei^{3#}, Magdalena Huber^{1#}

¹Institute for Medical Microbiology and Hospital Hygiene, University of Marburg, 35043 Marburg, Germany

²Core Facility Flow Cytometry, University of Marburg, 35043 Marburg, Germany

³German Rheumatism Research Center (DRFZ), an Institute of the Leibniz Association, 10117 Berlin, Germany

⁴Pediatric Allergology, Department of Pediatrics, Dr von Hauner Children's Hospital, University Hospital, LMU Munich, 80337 Munich, Germany

⁵Member of the German Center of Lung Research, (DZL), Germany

⁶Institute for Lung Research and Department of Pulmonary and Critical Care Medicine, Universities of Giessen and Marburg Lung Center, Philipps-University Marburg, Member of the German Center for Lung Research (DZL) and the German Center for Infection Research (DZIF), 35043 Marburg, Germany

⁷Technische Universität Berlin, Institute of Biotechnology, Chair of Cytometry, 13355 Berlin, Germany

*These authors contributed equally to this work, #These authors jointly directed this work

Acknowledgments

This work was generously supported by the Else Kröner-Fresenius-Stiftung (Research group: “Functional, therapy-aimed clustering of T-cell sub-phenotypes across plasticity”). MH is also supported by the Deutsche Forschungsgemeinschaft (DFG) (HU-1824/9-1, HU-1824/7-1, HU-1824/5-1). BS is supported by grants from BMBF 01GL1742A, DFG (DFG-SCHA 997/3-1,

DFG-SCHA 997/7-1, DFG-SCHA 997/8-1), from SFB TR22, grants Comprehensive Pneumology Center. JT is supported by grants from the DFG (DFG-SCHA 997/7-1). AB is supported by grants from BMBF (01GL1742A).

Figure Legends

Figure 1. Dysbalanced CD4⁺ and CD8⁺ T-cell compartment in paediatric AA. A. T- and NK-cell frequency. **B.** CD4/CD8 T-cell ratio. **C,G,H,J,K** Linear regression analysis in AA children of: (C,G) blood eosinophil frequency versus (C) CD4/CD8 T-cell ratio, (G) cluster_c6 frequency with/without comorbidity, (H) CD4/CD8 T-cell ratio versus c6(TIGIT⁺ICOS⁺) with intermittent symptoms or stable disease, (J) cluster_c30 frequency versus percent-predicted FEV1/FVC, (K) Fr-I versus Fr-II frequency. **D** tSNE-visualisation of 30 CD4⁺ T-cell cluster. **E.** Cluster_c6 and cluster_c30 frequency. **F.** Cluster_c6 mean marker expression. **I.** Dot-plot with cluster_c30 and eTregs overlay. A,B,E. mean \pm SD (A), *P* value by Mann-Whitney test.

Figure 2. Integrated T-cell signature distinguishes children with AA from HC. A. eTregs tSNE-visualization with cluster_c2 and cluster_c10. **B.** eTregs cluster_c2 and cluster_c10 frequency **C.** Cluster_c6TIGIT⁺ICOS⁺/eTreg ratio. **D.** Linear regression analysis of the respective ratios versus blood eosinophil frequency in AA children. **E.** Principal component analysis of the AA and HC samples based on the significantly regulated features (CD8⁺ T-cells, CM CD8⁺ T-cells, CD4⁺ T-cell_c6, CD4⁺ T-cell_c30, eTreg_c2, eTreg_c10 and CD4/CD8 T-cell ratio). **F.** Receiver operating characteristic (ROC) curves were calculated for CD4⁺ T-cell cluster_c30, eTreg cluster_c2 and eTreg_c10. B,C (*P* value by Mann-Whitney test).

FIGURE 1

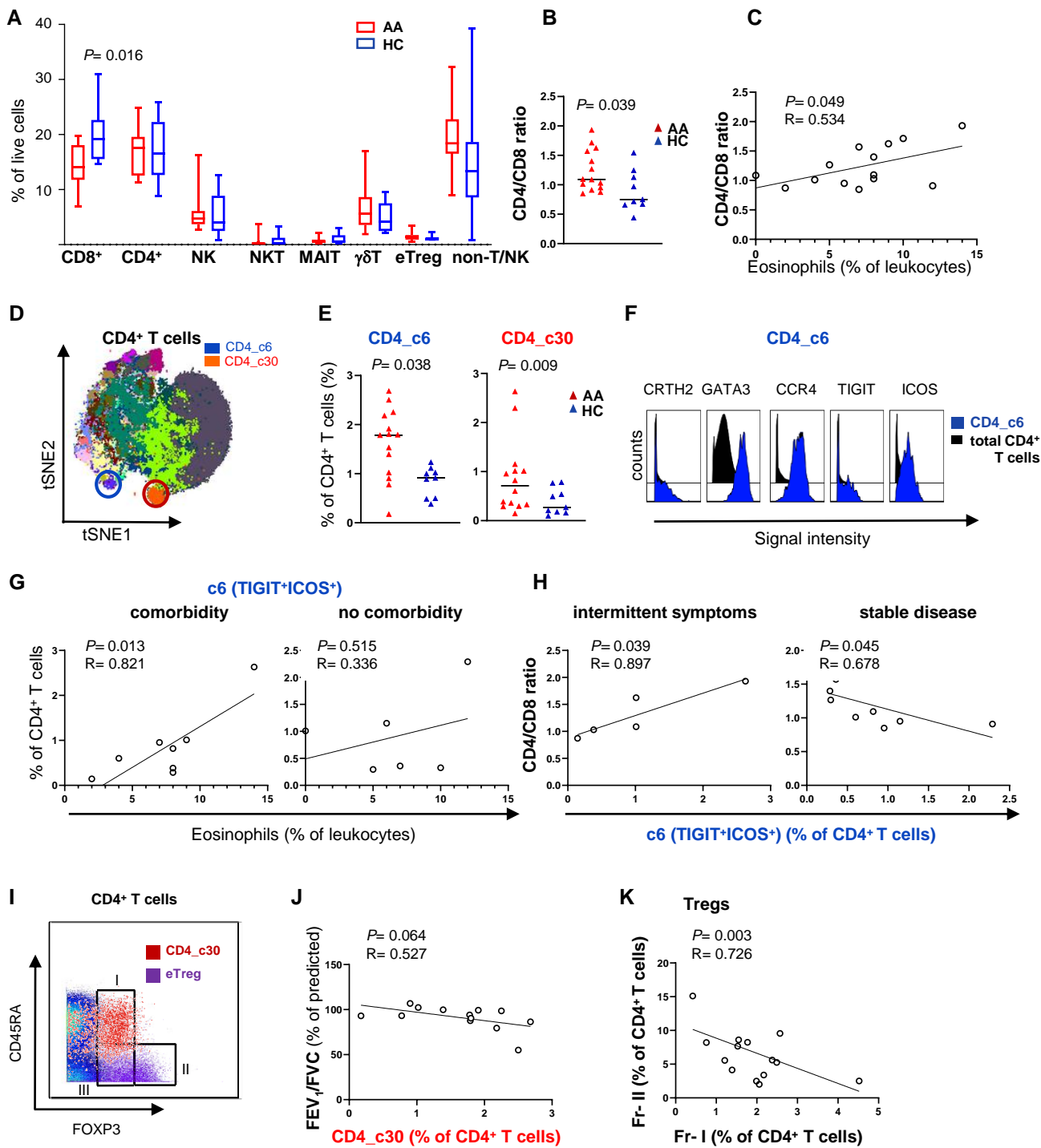


FIGURE 2

