

Long-term trends and drought:
spatiotemporal variation in juvenile sex ratios of North American ducks

Sage L. Ellis¹, Madeleine G. Lohman^{1,2}, James S. Sedinger¹, Perry J.
Williams¹, and Thomas V. Riecke^{1,2,3,4}

¹Department of Natural Resources and Environmental Science, University of Nevada, Reno, NV
89557, USA

²Program in Ecology, Evolution, and Conservation Biology, University of Nevada, Reno, NV
89557, USA

³Swiss Ornithological Institute, CH-6204 Sempach, LU, Switzerland

⁴Corresponding author: Thomas Riecke; thomasvanceriecke@gmail.com

Abstract

Sex ratios affect population dynamics and individual fitness, and changing sex ratios can be indicative of shifts in sex-specific survival at different life stages. While climate- and landscape-change alter sex ratios of wild bird populations, long-term, landscape scale assessments of sex ratios are rare. Further, little work has been done to understand changes in sex ratios in avian communities. In this manuscript, we analyse long-term (1961-2015) data on five species of ducks across five broad climatic regions of the United States to estimate the effects of drought and long-term trends on the proportion of juvenile females captured at banding. As waterfowl have a 1:1 sex ratio at hatch, we interpret changes in sex ratios of captured juveniles as changes in sex-specific survival rates during early life. Seven of twelve species-region pairs exhibited evidence for long-term trends in the proportion of juvenile females at banding. The proportion of juvenile females at banding increased for duck populations in the western United States and typically declined for duck populations in the eastern United States. We only observed evidence for an effect of drought in two of the twelve species-region pairs, where the proportion of females declined during drought. As changes to North American landscapes and climate continue and intensify, we expect continued changes in sex-specific juvenile survival rates. More broadly, we encourage further research examining the mechanisms underlying long-term trends in juvenile sex ratios in avian communities.

Key words: Bayesian, climate change, drought, hierarchical model, population sex ratio, sex-specific survival, waterfowl

1 Introduction

Sex ratios are a key component of population structure, but are often assumed to be constant due to the difficulty of estimating sex ratios in wild populations (Lee et al., 2011). However, sex ratios often vary temporally and spatially in populations of wild organisms (Lemons et al., 2012; Alisauskas et al., 2014; Frew et al., 2018; Fox and Cristensen, 2018). This variation can influence population dynamics and may indicate changes in ecological processes that influence sex ratios either pre- or post-nascence. Further, population sex ratios and mating systems are important drivers of effective population size, demographic stochasticity, and extinction risk (Nunney, 1993; Bessa-Gomes et al., 2004; Lee et al., 2011). Thus, understanding population sex ratios is critical for ecological theory and successful applied conservation efforts (Mayr, 1939; Donald, 2007).

Reviews of sex ratios in birds (Mayr, 1939; Donald, 2007) have repeatedly demonstrated that for the majority of bird populations, sex ratios differ from equilibrium and are male-biased. Researchers have identified three primary drivers behind skewed sex ratios. First, skewed sex ratios can arise due to unequal sex ratios at fertilization or conception. For instance, climatic variation has been linked to a skewed sex ratio in juvenile red-winged blackbirds (*Agelaius phoeniceus*), where longer nesting seasons lead to maternal adjustment of offspring sex ratio favoring juvenile females (Weatherhead, 2005). Similarly, Seychelles warblers (*Acrocephalus sechellensis*) facultatively adjust the sex ratio of eggs before laying based on the quality of habitat, with higher quality habitat favoring female-biased sex ratios (Komdeur, 1996; Komdeur et al., 1997). Second, differing sex ratios at birth might cause skewed sex ratios in a population, potentially due to sex-specific hatching probability in birds. Third, variation in sex-specific mortality rates could lead to skewed sex ratios in juveniles and adults (Veran and Beissinger, 2009; Eberhart-Phillips et al., 2018; Gownaris and Boersma, 2019). For instance, a number of studies have shown that variation in resource requirements of different sexes can lead to variation in juvenile mortality rates (Weatherhead

and Montgomerie, 1995; Cooch et al., 1997; Lemons et al., 2012). However, despite this body of research, few studies have examined variation in juvenile sex ratios of avian communities at continental or even regional scales (but see Fox and Cristensen 2018).

North American waterfowl banding data provide a rich opportunity to examine ecological questions at broad spatiotemporal scales (e.g., Ross et al. 2015; Specht and Arnold 2018; Zhao et al. 2019). As early as 1933, Aldo Leopold commented that the sex ratio of ducks was ‘seriously deranged’ (Leopold, 1933) while reviewing data generated by Lincoln (1932) that indicated duck populations have exceedingly male-biased adult sex ratios (Mayr, 1939; Bellrose et al., 1961). Puzzlingly, there is substantial evidence that waterfowl have an even sex ratio at hatch (Bellrose et al., 1961; Clutton-Brock, 1986; Blums and Mednis, 1996; Hepp et al., 1989; Lehikoinen et al., 2008; Swennen et al., 1979; Cooch et al., 1997; Lemons et al., 2012). In ducks, skewed adult sex ratio is driven by increased mortality risk for adult females during the breeding season. While males invest energy in plumage (Promislow et al., 1994) and mating attempts, females must produce, lay, and incubate eggs, and then brood and defend ducklings for several weeks. This energetic expenditure towards reproduction and increased predation risk (Sargeant et al., 1984) leads to reduced survival of breeding females relative to males (Arnold et al., 2016), and skews adult sex ratios. However, the potential for sex-biased survival during early life remains under-examined for ducks and other wildlife species, particularly at broad spatiotemporal scales. Sex-biased survival during early life can have important implications. For example, biased offspring sex ratios due to sex-specific juvenile survival rates in common eiders (*Somateria mollissima*), snowy plovers (*Charadrius nivosus*), and Magellanic penguins (*Spheniscus magellanicus*) lead to biased adult sex ratios in these species (Lehikoinen et al., 2008; Eberhart-Phillips et al., 2018; Gownaris and Boersma, 2019). Given a dramatic increase in adult male to female ratios in North American duck populations (Alisauskas et al., 2014) and the potential for variation in sex-specific juvenile mortality to affect adult sex ratios, we sought to examine long-term trends in sex ratios of juvenile ducks in North America.

We formulated two research questions regarding the sex ratio of juvenile ducks in North America: (1) Is the decline in the proportion of juvenile female ducks at banding in North America similar to declines observed in Europe (Fox and Cristensen, 2018), and do these declines vary spatially? (2) Given projected changes in precipitation and the strong linkage between hydrologic conditions and waterfowl populations (Sorenson et al., 1998), does drought play a role in affecting the sex ratio of juvenile ducks? We addressed these questions by modeling the effects of regional Palmer-Hydrological Drought Index (PHDI) and long-term trends on the proportion of juveniles captured at banding that were female for five duck species in five climatic regions defined by the National Center for Environmental Information (Figure 1; Karl and Koss, 1984) from 1961-2015.

2 Methods

We downloaded capture-release data for five different species of ducks that occur in North America: mallards (*Anas platyrhynchos*), northern pintails (*Anas acuta*), blue-winged teal (*Anas discors*), American black ducks (*Anas rubripes*), and wood ducks (*Aix sponsa*) from the U.S. Geological Survey GameBirds CD (Patuxent, MD, USA; USGS Bird Banding Laboratory 2017) for the years 1961-2015. We restricted release data to birds that were marked as hatch-year (i.e., flighted juvenile) from July-September. We obtained Palmer Hydrological Drought Index values from the National Oceanic and Atmospheric Administration’s Climate at a Glance: Regional Time Series from January 1961 - December 2015 (NOAA, 2020), and used the mean PHDI value from May-June as a measure of drought during the breeding season. We chose the Upper Midwest, Northeast, Northwest, West, and Northern Rockies and Plains climatic regions as study areas as these are the primary breeding areas for ducks in the contiguous United States (Figure 1; Karl and Koss, 1984).

We partitioned the release data into these five climate regions. Total releases for each

species in each region are provided in Table 1, and sample sizes through time per region, species, and sex can be found in the supplemental material (S1). We only included species and regions in analyses when greater than 27,500 individuals (500 individuals/year) had been released over the course of the study in a region. Since not all species were well represented in all regions across time, bold values in Table 1 represent the species-region pairs that we analyzed in this manuscript.

We developed a Bayesian hierarchical model that we describe using the appellation of Berliner (1996). We first created a data model which links our data, total captures of juvenile females and males per year in each region, to our proposed ecological process model for the probability of each juvenile being a female. Probability density or mass functions of our variables are noted using square brackets, so that $[a|b]$ represents the probability distribution of random variable a conditional on b . We used the same model for each species-region pair.

For each species-region pair, we estimated the probability of a juvenile being female during each year (π_t) as a function of the number of captured juvenile females (y_t) and the total number of captured juveniles (η_t) using a binomial distribution,

$$y_t \sim \text{Binomial}(\eta_t, \pi_t) \quad (1)$$

We modeled the log odds of the probability of a juvenile being female using a normal distribution with a time-varying mean (μ_t) with uncertainty (σ^2) on the logit scale. We modeled the time-varying mean as a function of an intercept (α), the Palmer Hydrological Drought Index (PHDI) specific to each climate region during each year, and a long-term trend.

$$\text{logit}(\pi_t) \sim \text{normal}(\mu_t, \sigma^2), \quad (2)$$

$$\mu_t = \alpha + \beta_{\text{PHDI}} * \text{PHDI}_t + \beta_t * t.$$

We assumed PHDI was measured without error. Negative PHDI values indicate drought,

119 while positive values indicate wet years. Thus, when interpreting β_{PHDI} values, a positive
120 value indicates that the proportion of juvenile females at banding decreases during drought,
121 and a negative value indicates that the proportion of juvenile females at banding increases
122 during drought. Each parameter included in the data and process model above required a
123 prior distribution. We chose vague priors for each parameter,

$$\begin{aligned}\sigma &\sim \text{gamma}(1, 1), \\ \alpha &\sim \mathcal{N}(0, 2.25), \\ \beta &\sim \mathcal{N}(0, 10).\end{aligned}\tag{3}$$

124 The joint posterior distribution can be expressed as,

$$\begin{aligned}[\alpha, \beta, \sigma, \pi | \mathbf{y}, \boldsymbol{\eta}] &\propto \prod_{t=1}^T [y_t | \pi_t, \eta_t] [\pi_t | \alpha, \beta, \sigma] \\ &\times [\alpha][\beta][\sigma].\end{aligned}\tag{4}$$

125 We used the package `rjags` (Plummer, 2019) in R version 3.6.2 (R Core Team, 2019)
126 for our analysis. We sampled three chains for 1,000,000 iterations, with a burn-in of 500,000
127 iterations. We retained every fiftieth iteration. We visually assessed convergence of param-
128 eters using trace plots, and all parameters had $\hat{R} < 1.01$ for all models. We used posterior
129 predictive checks to calculate Bayesian p-values for model-checking, using the deviance dis-
130 crepancy function as described in Conn et al. (2018). Bayesian p-values were between 0.1-0.9
131 for all models. Thus, our model-checking shows no evidence for lack of fit (Table 2).

3 Results

Greater than 1.5 million hatch-year ducks were captured at 2,291 unique sites (Figure 1) across five different U.S. climate regions from 1961-2015 (Table 1). We found support for long-term changes in juvenile sex ratios for seven of twelve species-region pairs (Figure 2), but only observed drought effects in two species-region pairs. The direction of temporal trends varied among species and regions, but seemed to generally vary along a longitudinal gradient (Figure 3), where sex ratios became more female-biased in western regions, and more male-biased in eastern regions. Mallard populations experienced long-term increases in the proportion of juvenile females at banding in the Northwest ($\beta_t = 0.081$, $f = 1$) and West ($\beta_t = 0.141$, $f = 1$) climate regions. In the Northern Rockies and Plains climate region, the proportion of juvenile females at banding increased for northern pintail ($\beta_t = 0.051$, $f = 0.98$), was stable for mallard, and declined for blue-winged teal ($\beta_t = -0.037$, $f = 0.99$). In the Upper Midwest climate region, the proportion of juvenile females at banding declined for wood duck ($\beta_t = -0.031$, $f = 1$), but was stable for mallard and blue-winged teal (Table 3). Finally, the proportion of juvenile females at banding declined for mallard ($\beta_t = -0.049$, $f = 1$) and wood duck ($\beta_t = -0.017$, $f = 0.99$) in the Northeast climate region, but was stable for blue-winged teal and American black duck. Drought generally did not impact sex ratios of juvenile waterfowl (Table 3), where there was little support for variation in the proportion of females at banding as a function of Palmer Hydrological Drought Index (Figure 4) for most species-region pairs. However, there was evidence that drought led to lower proportions of juvenile females at banding for American black duck in the Northeast climate region ($\beta_t = 0.009$, $f = 0.92$), and mallards in the Upper Midwest climate region ($\beta_t = 0.009$, $f = 0.93$).

4 Discussion

We observed substantial evidence for long-term changes in the proportion of juvenile females at banding relative to juvenile males in seven of the twelve study populations. Strikingly, this effect appears to change across longitudinal gradients, where the proportion of juvenile females at banding increased in western populations, and declined in eastern populations, similar to declines observed in Europe (Fox and Cristensen, 2018). Drought effects on sex ratios were rarely observed (two of 12 study populations), but consistently led to a lower proportion of juvenile females at banding during drought years when effects were significant. Numerous studies have documented 50:50 waterfowl sex ratios at hatch (e.g., Blums and Mednis 1996; Lemons et al. 2012). Thus, we interpret shifts in the proportion of juvenile females at banding as evidence for sex-specific variation in survival during early life, but cannot confirm any driving force.

We observed inter-regional variation in long-term changes in the proportion of juvenile females at banding. There are numerous hypotheses that might explain species- and region-specific variation in long-term trends in the proportion of juvenile females at banding. Lesser snow goose (*Anser caerulescens caerulescens*) juvenile sex ratios at banding became more female-biased over time as habitat degraded because of an overabundance of geese in breeding areas (Cooch et al., 1997). Cooch et al. (1997) attributed this shift to higher juvenile male mortality due to resource reduction, and the increased energetic requirements of structurally larger male goslings. Lemons et al. (2012) drew similar conclusions for a female-biased juvenile sex ratio due to differential early-life mortality in black brant (*Branta bernicla nigricans*). Thus, one hypothesis is that perhaps these long-term changes in the proportion of females at banding may be due to long-term shifts in habitat quality that vary longitudinally.

The species-region pairs with strong evidence for drought effects had lower proportions

of juvenile females at banding during drier years, and lower proportions of juvenile males at banding during wetter years. This is in direct contrast to the resource limitation hypothesis; drought conditions reduce available forage, leading to decreased early-life survival rates for larger-bodied individuals (i.e., males) relative to females. Of note, none of the species modeled in the Northern Rockies and Plains (i.e., Prairie Pothole Region) had support for drought affecting the proportion of juvenile females at banding, despite large sample sizes and clear evidence of drought affecting other duck demographic rates (Dufour and Clark, 2002). Future research should examine differential relationships between environmental conditions and sex-specific duckling survival at finer scales.

While our results provide insights into long-term changes at landscape scales, there may also be substantial heterogeneity within the climatic regions examined in this study. For example, within the Prairie Pothole Region, located in the Northern Rockies and Plains, western portions are becoming drier with less wetland availability while eastern portions become wetter with more wetland availability (Millelt et al., 2009; Niemuth et al., 2014). Substantial heterogeneity in fecundity also occurs at finer scales within the broad climatic regions we used as study areas (Specht and Arnold, 2018). Thus, perhaps our analyses did not adequately capture the effects of climate by using PHDI at large regional scales. We note that sampling effort, intensity, and location might also affect our results. For instance, during drought years field biologists trap ducks in extant wetlands that may have different habitat quality and conditions than nearby ephemeral or semi-permanent wetlands. Density-dependent mechanisms may also impact sex-specific juvenile duckling survival, and the duration and extent of existing abundance surveys did not allow us to incorporate the effects of density-dependence across all regions. These density-dependent mechanisms may vary spatially (Zhao et al., 2016; Specht and Arnold, 2018), and may act interactively with climate change to affect future waterfowl demographic rates (Zhao et al., 2018).

We might expect continued long-term changes in juvenile duck sex ratios as climate and

anthropogenic actions continue to impact these broad regions. As population demographers move away from including sex ratio as a constant in population estimates, small changes in sex ratio may influence projections from population models and associated management actions. It will be of paramount importance to continue banding efforts to monitor long-term changes in sex ratio and other demographic rates. While we have briefly discussed potential explanations for long-term trends, the underlying mechanistic reasons for the observed patterns in the data were not tested in our analyses, and should be examined further. Given the rarity at which researchers have examined changes in juvenile sex ratios at broad scales (Fox and Cristensen, 2018) in avian communities, we encourage continued research to both estimate baseline juvenile sex ratios in avian communities, and examine the mechanisms underlying long-term trends and short-term variation in response to climatic anomalies.

Author Contributions

SLE, TVR, and JSS conceived the manuscript, SLE led the analysis, with important contributions from TVR, MGL, and PJW. SLE and TVR led the writing of the manuscript. All authors contributed to manuscript revisions.

Acknowledgements

SLE, MGL and TVR were supported by Delta Waterfowl. MGL was supported by the Bonnycastle Fellowship for Wetland and Waterfowl Biology from the Institute for Wetland and Waterfowl Research, Ducks Unlimited Canada, and a National Science Foundation Graduate Research Fellowship. The authors profusely thank the tens of thousands of waterfowl banders that worked to build the tremendous capture-recapture-recovery data used herein.

Data Accessibility

Data and code for analyzing the data will be archived at the Dryad Digital Repository. Data used in this study are also compiled by and publicly available through the USGS Bird Banding Laboratory.

References

- Alisauskas, R. T., T. W. Arnold, J. O. Leafloor, D. L. Otis, and J. S. Sedinger (2014). Lincoln estimates of mallard (*Anas platyrhynchos*) abundance in North America. *Ecology and Evolution* 4:132–143.
- Arnold, T. W., A. D. Afton, M. J. Anteau, D. N. Koons, and C. A. Nicolai (2016). Temporal variation in survival and recovery rates of lesser scaup. *The Journal of Wildlife Management* 80:850–861.
- Bellrose, F. C., T. G. Scott, A. S. Hawkins, and J. B. Low (1961). Sex ratios and age ratios in North American ducks. *Illinois Natural History Survey Bulletin* 27:391–474.
- Bessa-Gomes, C., S. Legendre, and J. Clobert (2004). Allee effects, mating systems and the extinction risk in populations with two sexes. *Ecology Letters* 7:802–812.
- Blums, P. and A. Mednis (1996). Secondary sex ratio in Anatinae. *The Auk* 113:505–511.
- Clutton-Brock, T. (1986). Sex ratio variation in birds. *Ibis* 128:317–329.
- Conn, P. B., D. S. Johnson, P. J. Williams, S. R. Melin, and M. B. Hooten (2018). A guide to Bayesian model checking for ecologists. *Ecological Monographs* 88:526–542.
- Cooch, E., D. Lank, R. Robertson, and F. Cooke (1997). Effects of parental age and environmental change on offspring sex ratio in a precocial bird. *Journal of Animal Ecology* 66:189–202.

248 Donald, P. F. (2007). Adult sex ratios in wild bird populations. *Ibis* 149:671–692.

249 Dufour, K. W. and R. G. Clark (2002). Differential survival of yearling and adult female
250 mallards and its relation to breeding habitat conditions. *The Condor* 104:297–308.

251 Eberhart-Phillips, L. J., C. Küpper, M. C. Carmona-Isunza, O. Vincze, S. Zefania, M. Cruz-
252 López, A. Kosztolányi, T. E. Miller, Z. Barta, I. C. Cuthill, et al. (2018). Demographic
253 causes of adult sex ratio variation and their consequences for parental cooperation. *Nature*
254 *Communications* 9:1–8.

255 Fox, A. D. and T. K. Cristensen (2018). Could falling female sex ratios among first-winter
256 northwest European duck populations contribute to skewed adult sex ratios and overall
257 population declines? *Ibis* 160:929–935.

258 Frew, R. T., K. Brides, T. Clare, L. MacLean, D. Rigby, C. G. Tomlinson, and K. A. Wood
259 (2018). Temporal changes in the sex ratio of the common pochard *Aythya ferina* compared
260 to four other duck species at Martin Mere, Lancashire, UK. *Wildfowl* 68:140–154.

261 Gownaris, N. and P. Boersma (2019). Sex-biased survival contributes to population decline
262 in a long-lived seabird, the Magellanic Penguin. *Ecological Applications* 29:e01826.

263 Hepp, G. R., R. A. Kennamer, and W. F. Harvey (1989). Recruitment and natal philopatry
264 of wood ducks. *Ecology* 70:897–903.

265 Karl, T. and W. J. Koss (1984). Regional and national monthly, seasonal, and annual
266 temperature weighted by area, 1895-1983. *Historical Climatology Series* 4-3 .

267 Komdeur, J. (1996). Facultative sex ratio bias in the offspring of Seychelles warblers. *Pro-*
268 *ceedings of the Royal Society of London. Series B: Biological Sciences* 263:661–666.

269 Komdeur, J., S. Daan, J. Tinbergen, and C. Mateman (1997). Extreme adaptive modification
270 in sex ratio of the Seychelles warbler’s eggs. *Nature* 385:522–525.

271 Lee, A. M., B.-E. Sæther, and S. Engen (2011). Demographic stochasticity, allee effects,
 272 and extinction: the influence of mating system and sex ratio. *The American Naturalist*
 273 177:301–313.

274 Lehtikoinen, A., M. Öst, T. Hollmén, and M. Kilpi (2008). Does sex-specific duckling mor-
 275 tality contribute to male bias in adult common eiders. *The Condor* 110:574–578.

276 Lemons, P. R., J. S. Sedinger, C. A. Nicolai, and L. W. Oring (2012). Sexual dimorphism,
 277 survival, and parental investment in relation to offspring sex in a precocial bird. *Journal*
 278 *of Avian Biology* 43:445–453.

279 Leopold, A. (1933). *Game management*. Charles Scribner’s Sons.

280 Lincoln, F. C. (1932). Do drakes outnumber females? *American Game* 21:3–17.

281 Mayr, E. (1939). The sex ratio in wild birds. *The American Naturalist* 73:156–179.

282 Millett, B., W. C. Johnson, and G. Guntenspergen (2009). Climate trends of the North
 283 American Prairie Pothole Region 1906–2000. *Climatic Change* 93:243–267.

284 Niemuth, N. D., K. K. Fleming, and R. E. Reynolds (2014). Waterfowl conservation in the
 285 US Prairie Pothole Region: confronting the complexities of climate change. *PLOS One*
 286 9:e100034.

287 NOAA National Centers for Environmental Information (2020). *Climate at a Glance:*
 288 *Regional Time Series*. Published March 2020, retrieved on March 16, 2020 from
 289 <https://www.ncdc.noaa.gov/cag/>.

290 Nunney, L. (1993). The influence of mating system and overlapping generations on effective
 291 population size. *Evolution* 47:1329–1341.

292 Plummer, M. (2019). *rjags: Bayesian Graphical Models using MCMC*. R package version
 293 4-9.

- Promislow, D., R. Montgomerie, and T. E. Martin (1994). Sexual selection and survival in North American waterfowl. *Evolution* 48:2045–2050.
- R Core Team (2019). R: A Language and Environment for Statistical Computing. R Foundation for Statistical Computing, Vienna, Austria.
- Ross, B. E., M. B. Hooten, J.-M. DeVink, and D. N. Koons (2015). Combined effects of climate, predation, and density dependence on greater and lesser scaup population dynamics. *Ecological Applications* 25:1606–1617.
- Sargeant, A. B., S. H. Allen, and R. T. Eberhardt (1984). Red fox predation on breeding ducks in midcontinent North America. *Wildlife Monographs* 89:3–41.
- Sorenson, L. G., R. Goldberg, T. L. Root, and M. G. Anderson (1998). Potential effects of global warming on waterfowl populations breeding in the northern great plains. *Climatic change* 40:343–369.
- Specht, H. M. and T. W. Arnold (2018). Banding age ratios reveal prairie waterfowl fecundity is affected by climate, density dependence and predator–prey dynamics. *Journal of Applied Ecology* 55:2854–2864.
- Swennen, C., P. Duiven, and L. Reyrink (1979). Notes on the sex ratio in the common eider *Somateria mollissima* (L.). *Ardea* 67:54–61.
- USGS Bird Banding Laboratory (2017). North American bird banding and band encounter data set. Patuxent Wildlife Research Center, Laurel, MD. Created August 2017.
- Veran, S. and S. R. Beissinger (2009). Demographic origins of skewed operational and adult sex ratios: perturbation analyses of two-sex models. *Ecology Letters* 12:129–143.
- Weatherhead, P. J. (2005). Effects of climate variation on timing of nesting, reproductive success, and offspring sex ratios of red-winged blackbirds. *Oecologia* 144:168–175.

- 317 Weatherhead, P. J. and R. Montgomerie (1995). Local resource competition and sex ratio
318 variation in birds. *Journal of Avian Biology* 26:168–171.
- 319 Zhao, Q., G. S. Boomer, and W. L. Kendall (2018). The non-linear, interactive effects
320 of population density and climate drive the geographical patterns of waterfowl survival.
321 *Biological Conservation* 221:1–9.
- 322 Zhao, Q., G. S. Boomer, and J. A. Royle (2019). Integrated modeling predicts shifts in
323 waterbird population dynamics under climate change. *Ecography* 42:1470–1481.
- 324 Zhao, Q., E. Silverman, K. Fleming, and G. S. Boomer (2016). Forecasting waterfowl pop-
325 ulation dynamics under climate change—does the spatial variation of density dependence
326 and environmental effects matter? *Biological Conservation* 194:80–88.

Tables

Table 1. Total hatch-year (i.e., flighted juvenile) captures of American black duck (ABDU), blue-winged teal (BWTE), mallard (MALL), northern pintail (NOPI), and wood duck (WODU) in each NOAA U.S. Climate Region (Karl and Koss, 1984) from July-September, 1961-2015. Capture and release data are from the U.S. Geological Service Bird Banding Laboratory GameBirds CD (Patuxent, MD, USA). Bold values indicate the specific species and regions used in the analysis.

Region	Species Codes				
	ABDU	BWTE	MALL	NOPI	WODU
Northeast	70962	28529	201496	1833	122183
Upper Midwest	8498	59545	338093	5126	182944
Northern Rockies and Plains	23	173925	145877	45814	2408
Northwest	0	748	116309	10219	8978
West	0	13	91289	15002	1964

Table 2. Bayesian p -values of models estimating the proportion of hatch year (i.e., flighted juvenile) ducks that are females for American black duck (ABDU), blue-winged teal (BWTE), mallard (MALL), northern pintail (NOPI), and wood duck (WODU) in five NOAA U.S. Climate Regions (Karl and Koss, 1984) from 1961-2015.

Region	Species Codes				
	ABDU	BWTE	MALL	NOPI	WODU
Northeast	0.72	0.42	0.53	-	0.63
Upper Midwest	-	0.88	0.52	-	0.49
Northern Rockies and Plains	-	0.80	0.58	0.72	-
Northwest	-	-	0.54	-	-
West	-	-	0.59	-	-

Table 3. Means (μ), standard deviations (σ), and f-values (f; the proportion of the marginal posterior distribution on the same side of zero as the mean) of regression parameter posterior distributions for the effects of a long-term trend (Time) and Palmer Hydrological Drought Index (PHDI) from models of juvenile sex ratio of American black duck (ABDU), blue-winged teal (BWTE), mallard (MALL), northern pintail (NOPI), and wood duck (WODU) marked in five NOAA U.S. Climate Regions (NE = Northeast, UM = Upper Midwest, RP = Northern Rockies and Plains, NW = Northwest, and WE = West; Karl and Koss 1984) from 1961-2015.

Species_Region	Time			PHDI		
	μ	σ	f	μ	σ	f
ABDU_NE	-0.007	0.014	0.71	0.009	0.006	0.92
BWTE_UM	-0.002	0.018	0.54	-0.006	0.010	0.73
BWTE_RP	-0.037	0.016	0.99	0.006	0.006	0.82
BWTE_NE	-0.007	0.025	0.61	0.002	0.012	0.58
MALL_NE	-0.049	0.011	1	-0.006	0.006	0.83
MALL_UM	0.007	0.011	0.76	0.009	0.006	0.93
MALL_RP	0.008	0.020	0.65	-0.004	0.007	0.70
MALL_NW	0.081	0.023	1	0.005	0.012	0.65
MALL_WE	0.141	0.029	1	-0.007	0.010	0.76
NOPI_RP	0.051	0.024	0.98	0.003	0.009	0.63
WODU_NE	-0.017	0.007	0.99	-0.001	0.004	0.62
WODU_UM	-0.031	0.007	1	0.002	0.004	0.69

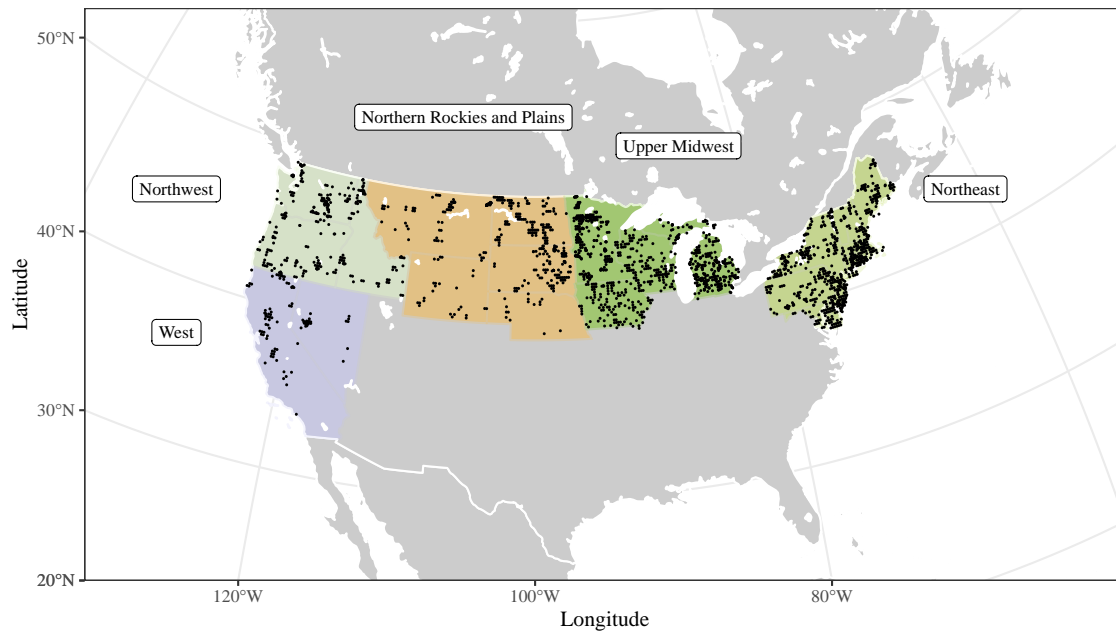


Figure 1. Release locations ($n = 2,291$) of 1,578,169 hatch-year ducks of five species marked in the West, Northwest, Northern Rockies and Plains, Upper Midwest, and Northeast U.S. Climate Regions (Karl and Koss, 1984) from 1961-2015.

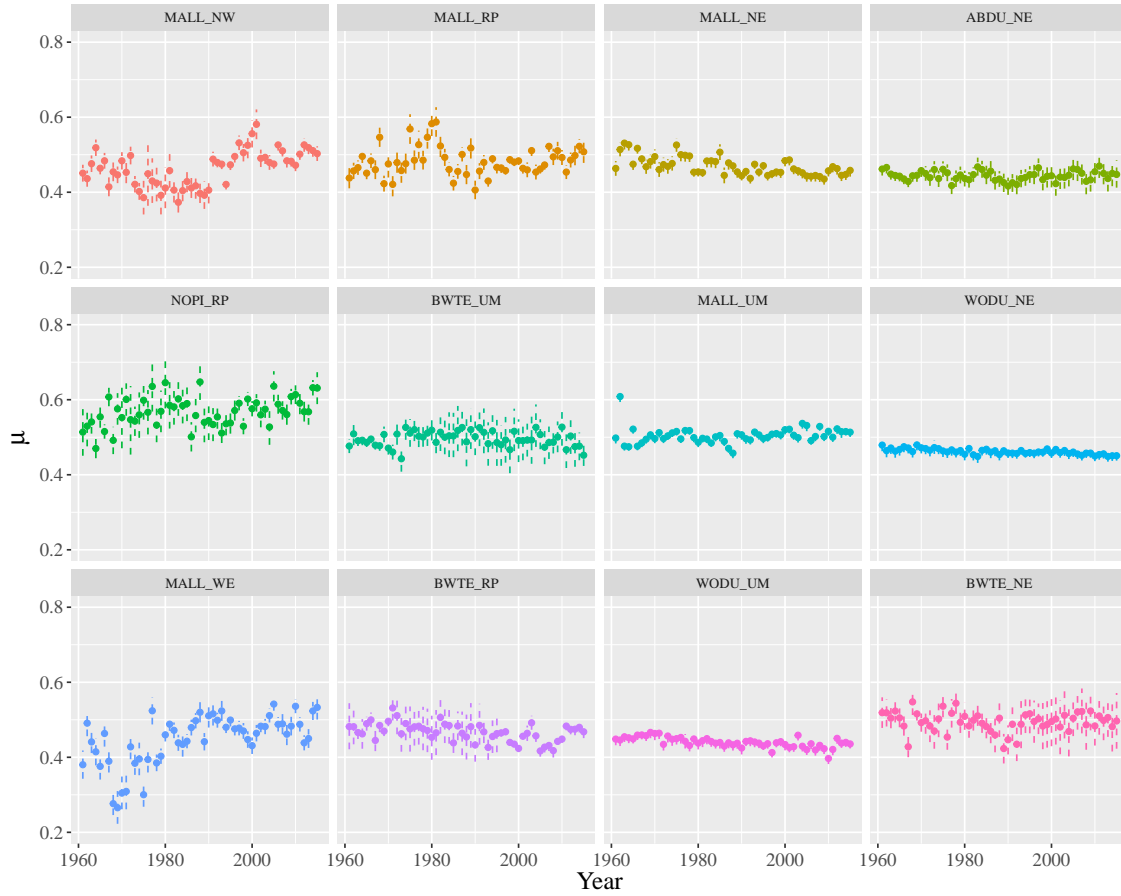


Figure 2. Means (points) and 95% credible intervals (dashed lines) of posterior distributions for estimates of the proportion of females for American black duck (ABDU), blue-winged teal (BWTE), mallard (MALL), northern pintail (NOPI), and wood duck populations in the Northeast (NE), Northern Rockies and Plains (RP), Upper Midwest (UM), Northwest (NW), and West (WE) U.S. Climate Regions (Karl and Koss, 1984)

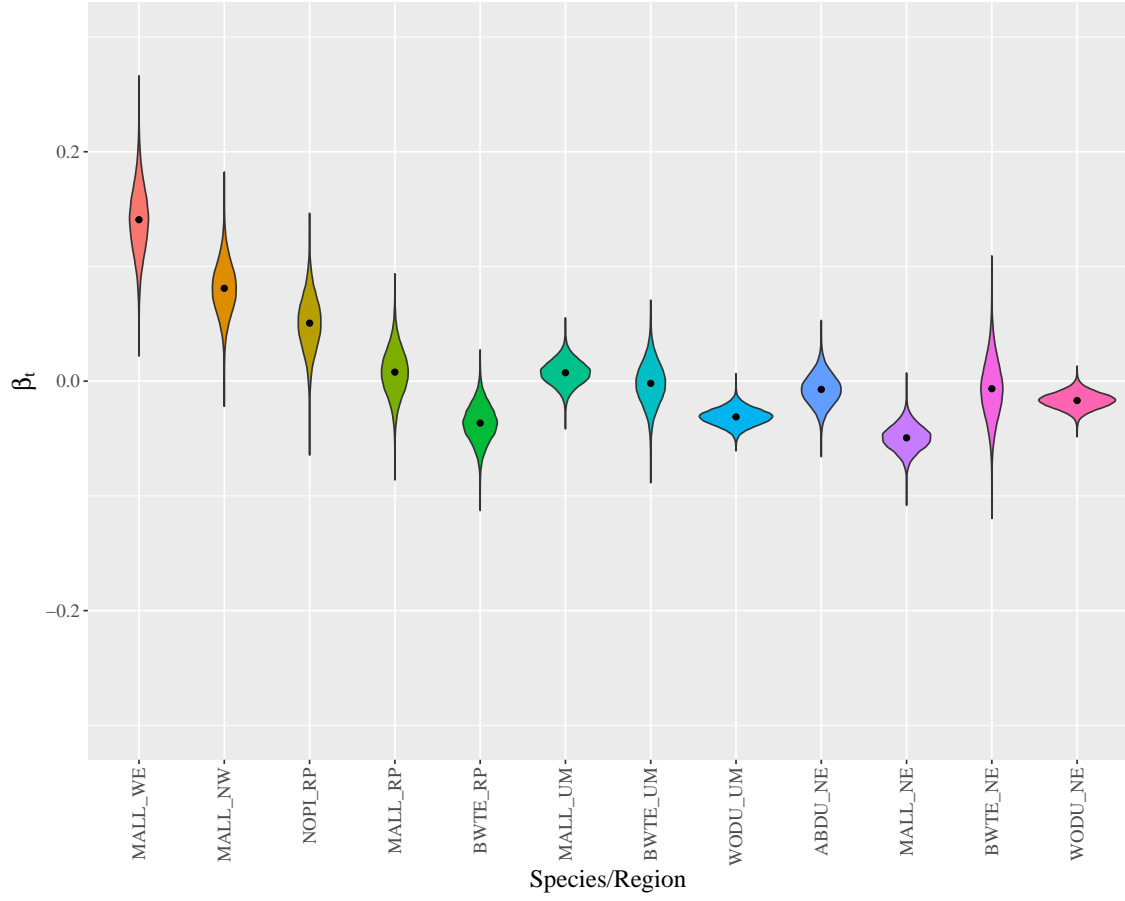


Figure 3. Violin plots of marginal posterior distributions and means (points) of the effect of long-term trends on the proportion of juvenile females for American black ducks (ABDU), blue-winged teal (BWTE), mallards (MALL), northern pintails (NOPI), and wood ducks (WODU) in the Northeast (NE), Northern Rockies and Plains (RP), Upper Midwest (UM), Northwest (NW), and West (WE) U.S. Climate Regions (Karl and Koss, 1984).

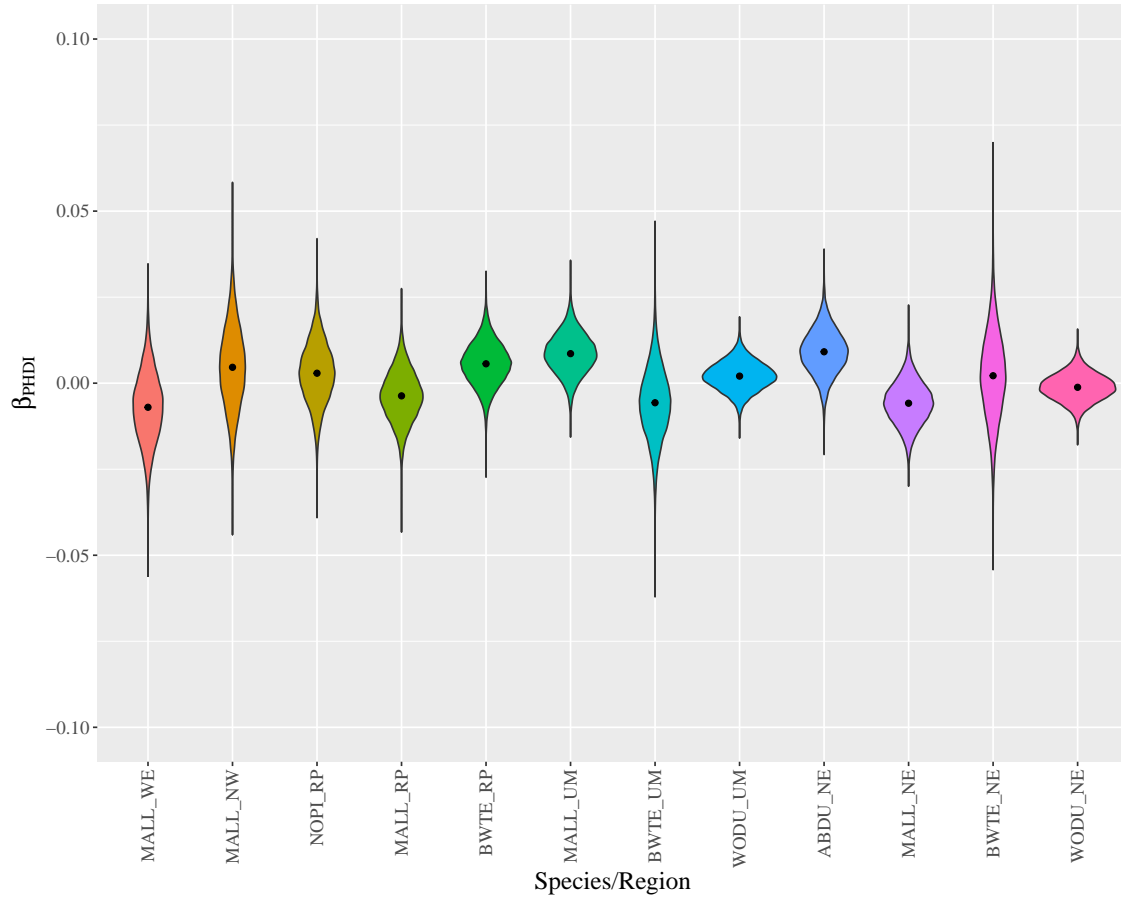


Figure 4. Violin plots of marginal posterior distributions and means (points) of the effect of Palmer Hydrological Drought Index (PHDI) on the proportion of juvenile females for American black ducks (ABDU), blue-winged teal (BWTE), mallards (MALL), northern pintails (NOPI), and wood ducks (WODU) in the Northeast (NE), Northern Rockies and Plains (RP), Upper Midwest (UM), Northwest (NW), and West (WE) U.S. Climate Regions (Karl and Koss, 1984).