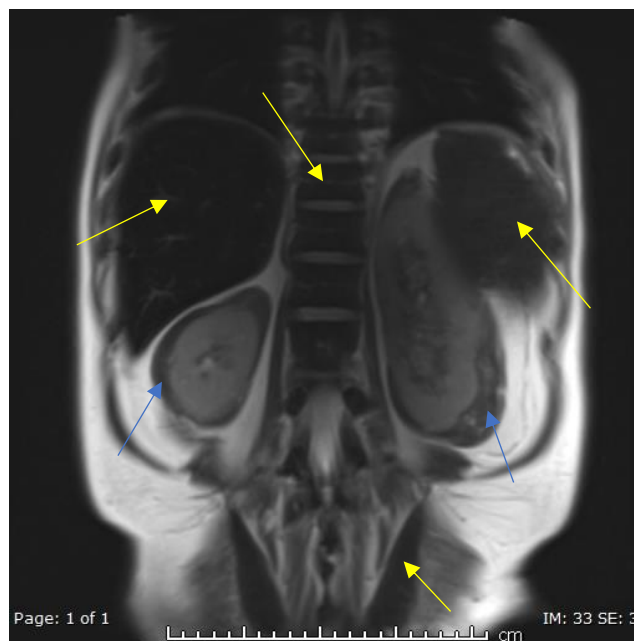
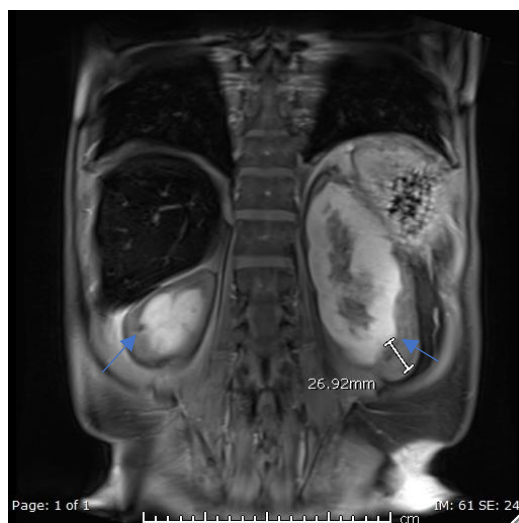




A



B



C

A) Coronal T1-WI of the abdomen, B) Coronal T2 WI of the abdomen and C) Coronal T1 WI post contrast with fat saturation.

Thick rind of soft tissue is seen surrounding both kidneys contained within the Gerota's fascia with no contour deformity against the kidneys (Blue arrows).

Dark signal in T2 WI of the spleen, liver and bone marrow of the lumbar spine and visualized pelvic bones due to underlying myelofibrosis (Yellow arrows in B)