

# Expansion microscopy of apicomplexan parasites

Benjamin Liffner<sup>1\*</sup>, Sabrina Absalon<sup>1\*</sup>

<sup>1</sup>Department of Pharmacology and Toxicology, Indiana University School of Medicine, Indianapolis, IN, USA.

\* Co-corresponding authors

E-mail: [Bliffner@iu.edu](mailto:Bliffner@iu.edu), [Sabsalon@iu.edu](mailto:Sabsalon@iu.edu).

ORCID IDs:

- **Benjamin Liffner** – 0000-0002-1573-6139
- **Sabrina Absalon** – 0000-0003-2468-8156

## SUMMARY

Apicomplexan parasites comprise significant pathogens of humans, livestock, and wildlife, but also represent a diverse group of eukaryotes with interesting and unique cell biology. Study of cell biology in apicomplexan parasites is complicated by their small size, and historically this has required the application of cutting-edge microscopy techniques to investigate fundamental processes like mitosis or cell division in these organisms. Recently, a technique called expansion microscopy has been developed, which rather than increasing instrument resolution like most imaging modalities, physically expands a biological sample >4-fold. In only a few years since its development, a derivative of expansion microscopy known as ultrastructure-expansion microscopy (U-ExM) has been widely adopted and proven extremely useful for studying cell biology of Apicomplexa. Here we review the insights into apicomplexan cell biology that have been enabled through the use of U-ExM, with a specific focus on *Plasmodium*, *Toxoplasma*, and *Cryptosporidium*. Further, we summarise emerging expansion microscopy modifications and modalities and forecast how these may influence the field of parasite cell biology in future.

**Keywords:** U-ExM, *Plasmodium*, *Toxoplasma*, *Cryptosporidium*, cytoskeleton.

26 **Cell biology of apicomplexan parasites.**

27 Protists, or protozoans, are the least well studied of the four Linnaean kingdoms of life but exhibit the  
28 overwhelming majority of biological diversity in eukaryotes (Patterson 1999, Burki, Roger et al. 2020).  
29 Therefore, these single-celled organisms represent a treasure-trove of cell biology that is waiting to be  
30 explored. Apicomplexa are a phylum that mostly consists of intracellular protozoan parasites, that include  
31 significant pathogens of humans, livestock animals and wildlife. Typically, apicomplexan parasites have  
32 distinct lifecycle stages that invade host cells, undergo asexual replication, undergo sexual replication, and  
33 enable transmission to a new host (Morrisette and Sibley 2002, Smith, Walliker et al. 2002, Sibley 2010).  
34 The diverse ways that apicomplexan parasites perform these most basic biological functions can help reveal  
35 aspects of cell biology that are either unique to the phylum or shared across eukaryotes. Further, aspects of  
36 cell biology that are unique to Apicomplexa can potentially be targeted with therapeutics to treat and prevent  
37 parasitic disease in humans and animals.

38 This review will focus on the cell biology of three genera of apicomplexan parasites in particular:  
39 *Plasmodium*, a parasite that is transmitted by its mosquito host and causes malaria in humans and animals  
40 (Cowman, Healer et al. 2016); *Toxoplasma*, a generalist parasite of warm-blooded animals that can cause  
41 disease in both humans and livestock animals (Hill and Dubey 2002); and *Cryptosporidium*, an intestinal  
42 parasite that is a significant cause of diarrheal disease in humans (Guérin and Striepen 2020). These three  
43 parasites were chosen as the focus of this review as they comprise much of apicomplexan diversity, they all  
44 represent significant causes of human disease, and they are the apicomplexan parasites whose cell biology is  
45 the most well studied.

46 Investigation of the cell biology of apicomplexan parasites has been vital for developing our  
47 understanding of the most fundamental processes in these parasites, along with identifying novel targets for  
48 drugs and defining resistance mechanisms for existing drugs. Despite this, many aspects of the cell biology of  
49 apicomplexan parasites are extremely difficult to interrogate because of the small size of these parasites. For  
50 example, the nucleus of a blood-stage *Plasmodium* parasite is <1 µm in diameter (Rudlaff, Kraemer et al.  
51 2020), which makes resolving sub-nuclear biology difficult or impossible using conventional light microscopy  
52 techniques. Further, the rhoptries, secretory organelles that coordinate host cell invasion, are as narrow as ~30

nm in *Toxoplasma* (Mageswaran, Guérin et al. 2021), making it impossible to individually distinguish each of the 8-12 rhoptries in a tachyzoite without using electron microscopy. Historically, these physical barriers have been a driver for innovation in the biological imaging of parasites, with an impressive array of super-resolution light microscopy (Riglar, Richard et al. 2011, Gras, Jimenez-Ruiz et al. 2019), electron microscopy or tomography (Hanssen, Dekiwadia et al. 2013, Mageswaran, Guérin et al. 2021), and x-ray microscopy (Hanssen, Knoechel et al. 2011) techniques having been utilised to interrogate parasite biology. The downside of these techniques, however, is that they often involve extremely expensive infrastructure, non-commercial reagents, specialised expertise to perform, or some combination of these three.

### **Expansion microscopy.**

In 2015, however, an alternative approach to periodically and incrementally upgrading microscopy infrastructure was developed; expansion microscopy (ExM) (Chen, Tillberg et al. 2015). In principle, expansion microscopy is simple, instead of spending hundreds of thousands of dollars to look closer at your sample, you make it bigger. Since the first ExM protocol was published, dozens of derivatives have been developed, but all are similar in at least four particular ways (Wassie, Zhao et al. 2019). Firstly, a biological specimen is covalently anchored to a polymer solution (Wassie, Zhao et al. 2019). This polymer solution is then turned into a hydrogel, that will expand when deionised water is added or shrink when a solution of high osmolarity is added (such as PBS) (Wassie, Zhao et al. 2019). The sample is processed in a way that physically allows it to expand, such as denaturation or proteinase K digestion (Wassie, Zhao et al. 2019). Finally, the sample will be stained with some kind of fluorescent markers, such as fluorophore conjugated antibodies. Overall, these steps combine to physically expand your biological specimen between 4-fold and >20-fold depending on the protocol used (Truckenbrodt, Maidorn et al. 2018, Gambarotto, Zwettler et al. 2019, Wassie, Zhao et al. 2019, Louvel, Haase et al. 2022, Klimas, Gallagher et al. 2023). While ExM represented a tremendous technical and conceptual breakthrough in the way we think about and approach microscopy experiments, early ExM protocols were not widely adopted by the parasitology community.

### *Ultrastructure expansion microscopy (U-ExM).*

Expansion microscopy became widely adopted within the parasitology community following the first published examples of ExM on apicomplexan parasites, with *T. gondii* being expanded using a protocol named

ultrastructure-expansion microscopy (U-ExM) (Tosetti, Dos Santos Pacheco et al. 2020). U-ExM results in ~4.5-fold expansion of the sample and was specifically developed with isotropic ultrastructural preservation of both cells and organelles in mind (Gambarotto, Zwettler et al. 2019). While not very technically different from other ExM protocols, U-ExM exclusively uses commonly commercially available reagents and is compatible with almost all reagents regularly used in fluorescence microscopy, making it easily deployable for parasite labs around the world. Since the first publication of U-ExM on *Toxoplasma*, a further 28 studies have been published on apicomplexan parasites using this technique in less than three years (see Tables 1-3 for summary of all U-ExM studies in Apicomplexa). These studies have spanned five species (*Toxoplasma gondii*, *Cryptosporidium parvum*, *P. falciparum*, *P. yoelii*, *P. berghei*), eight lifecycle stages, and localised over 80 proteins using either protein-specific antibodies or tagged proteins (Tables 1-3). A single study using an ExM technique other than U-ExM has been published on apicomplexan parasites (Pavlou, Touquet et al. 2020), but to date U-ExM has been the favoured technique for groups studying Apicomplexa.

This review will briefly introduce the lifecycles of *Plasmodium*, *Toxoplasma*, and *Cryptosporidium*, and summarise how U-ExM has changed our understanding of the cell biology of these parasites.

## ***Plasmodium***

While there are many species of *Plasmodium*, this review will predominantly focus on those that infect humans (especially *P. falciparum*), with some information inferred from studies in rodent-infecting *Plasmodium* spp. (*P. berghei* and *P. yoelii*). *Plasmodium* parasites in the sporozoite stage of the lifecycle are transmitted from their mosquito hosts to their mammalian hosts during a blood meal (Frischknecht and Matuschewski 2017). Sporozoites migrate from the skin to the liver, where they will invade a hepatocyte and replicate asexually to form a hepatic schizont that contains thousands of merozoites (Prudêncio, Rodriguez et al. 2006). Merozoites will egress from the hepatic schizont into the blood stream, where they invade host red blood cells (Cowman, Berry et al. 2012). Following red blood cell invasion, parasites progress through the ring and trophozoite morphological stages before undergoing asexual replication to form a schizont that contains ~20 daughter merozoites (Voß, Klaus et al. 2023). Merozoites will then egress from the red blood cell (Dvorin and Goldberg 2022) to invade a new host red blood cell and repeat this cycle of asexual replication. A portion of these asexual parasites will commit to sexual differentiation (Neveu, Beri et al. 2020) and form

sexual stages known as gametocytes (Josling and Llinás 2015). Male and female gametocytes are transferred to a mosquito through a subsequent blood meal, where they will egress from the red blood cell and undergo gametogenesis (Dash, Sachdeva et al. 2022). Each male gametocyte undergoes three rounds of mitosis to form eight gametes, which will fertilise a female gamete to form a diploid zygote (Guttery, Roques et al. 2015). The zygote will soon undergo meiosis and form a tetraploid ookinete (Guttery, Roques et al. 2015), which will invade the mosquito midgut wall and form an oocyst (Vinetz 2005). Inside this oocyst, the parasite replicates asexually to form tens of thousands of sporozoites (Frischknecht and Matuschewski 2017). Once fully mature, sporozoites will rupture from the oocyst into the haemocoel of the mosquito before migrating to and invading the mosquito salivary gland (Mueller, Kohlhepp et al. 2010). Sporozoites will then reside in the salivary gland until the mosquito takes another blood meal.

Across their lifecycle, malaria parasites perform at least four distinct host cell invasion and egress events, transmission between hosts twice, and undergo asexual replication four times and sexual replication once. These major events are hubs for discovery and investigation of *Plasmodium*-specific, apicomplexan-specific, and broad eukaryote cell biology.

### U-ExM in *Plasmodium*

The first study using U-ExM in *Plasmodium* expanded gametocytes, ookinetes and schizonts of *P. berghei* (Bertiaux, Balestra et al. 2021). While the focus of this study was on the cytoskeleton of the parasites, the authors importantly stained parasites with a fluorophore-conjugated N-hydroxysuccinimide (NHS) ester (Bertiaux, Balestra et al. 2021). NHS ester binds free amine groups and so when parasites stained with NHS ester conjugated to a fluorophore (hereafter simply referred to as NHS ester) are visualised (Nanda and Lorsch 2014), the outcome is essentially a protein density map of the parasite. Use of NHS ester therefore allows the visualisation of a number of protein dense structures within the parasite (similar to electron microscopy), without the need for protein-specific antibodies. Across various stages of the *Plasmodium* lifecycle, NHS ester has been used to visualise the rhoptries, cytoskeleton, basal complex, cytostomes, apical polar ring (APR), and nuclear microtubule organising centre (MTOC) (Bertiaux, Balestra et al. 2021, Liffner and Absalon 2021, Simon, Funaya et al. 2021, Rashpa and Brochet 2022, Liffner, Cepeda Diaz et al. 2023, Rashpa, Klages et al. 2023, Yang, Cai et al. 2023); highlighting it is a powerful tool for generally observing changes within the

134 parasite. Following publication of the first study using U-ExM in *Plasmodium*, further significant  
135 developments were made when the protocol was optimised for the most common *Plasmodium* fixative,  
136 paraformaldehyde (Simon, Funaya et al. 2021), followed by the first U-ExM experiments using *P. falciparum*  
137 (Simon, Funaya et al. 2021). Subsequently, modifications to the U-ExM protocol were made to streamline the  
138 process for harvesting malaria parasites at multiple timepoints/lifecycle stages (Liffner and Absalon 2021),  
139 along with the testing of a wide number of marker antibodies and chemical dyes (Liffner, Cepeda Diaz et al.  
140 2023). To date, nearly all lifecycle *Plasmodium* lifecycle stages have been expanded using U-ExM (Figure 2).  
141 These experiments have spanned *P. falciparum*, *P. yoelii*, and *P. berghei* and localised dozens of proteins  
142 (Table 1). Below, we provide a brief summary of some of the cell biology findings in *Plasmodium* that have  
143 been enabled by U-ExM.

#### 144 The cytoskeleton of *Plasmodium* redefined.

145 Since the first application of U-ExM to malaria parasites (Bertiaux, Balestra et al. 2021), the  
146 cytoskeleton of the parasite has been overwhelmingly the most studied aspect of parasite cell biology. The  
147 most significant finding of the first U-ExM study in *Plasmodium* was the conservation of a conoid during the  
148 ookinete stage of the parasite lifecycle (Bertiaux, Balestra et al. 2021). The conoid is a tubulin-rich structure  
149 at the apical end of the motile/invasive stages of many apicomplexans (Dos Santos Pacheco, Tosetti et al.  
150 2020). Presence or absence of the conoid in apicomplexan parasites was long thought to be a defining feature  
151 of two classes of parasites, the Conoidasida (conoid present) and Aconoidasida (conoid lacking) (Dos Santos  
152 Pacheco, Tosetti et al. 2020). *Plasmodium* was considered to be part of the Aconoidasida, but using U-ExM,  
153 the authors showed not only that *P. berghei* ookinetes possess a conoid-like structure at their apical end, but  
154 also that *Plasmodium* homologues of canonical conoid markers localise to this structure (Bertiaux, Balestra et  
155 al. 2021). In addition to this foundational observation of conoid conservation, the authors also visualised the  
156 cytoskeleton of activated male gametocytes and gametes and merozoites (Bertiaux, Balestra et al. 2021). They  
157 showed that in each of these stages, along with ookinetes, that the subpellicular microtubules (SPMTs),  
158 cytosolic microtubules thought to define parasite shape, are stabilised by polyglutamylation and that this  
159 polyglutamylation can be recognised using anti-PolyE antibodies (Bertiaux, Balestra et al. 2021). The ability

160 to specifically detect SPMTs has subsequently been utilised in other studies to distinguish intranuclear  
161 microtubules from SPMTs (Liffner, Cepeda Diaz et al. 2023).

162 Once the cytoskeleton of gametocytes and ookinetes had been defined using U-ExM, subsequent  
163 studies have built on these observations by characterising cytoskeletal proteins using U-ExM. A recent study  
164 using U-ExM in *P. yoelii* showed that Apical Polar Ring protein 2 (APR2) is involved with stabilising ookinete  
165 SPMTs and anchoring them to the APR, with APR2 knockout parasites showing microtubule accumulations  
166 at their basal end (Qian, Wang et al. 2022). Other studies have shown that F-box protein 1 (FBXO1) (Rashpa,  
167 Klages et al. 2023) along with kinesins 13 and 20 (Zeeshan, Rashpa et al. 2022) play a role in cytoskeletal  
168 integrity and organisation in both ookinetes and male gametocytes. Collectively, this highlights the importance  
169 of the initial description of the *Plasmodium* cytoskeleton by U-ExM as it is now being leveraged as a platform  
170 to identify and investigate cytoskeletal proteins and phenotypes.

#### 171 Description of a bipartite nuclear microtubule organising centre (MTOC).

172 Apicomplexa undergo closed mitosis (Gerald, Mahajan et al. 2011, Voß, Klaus et al. 2023), with the  
173 nuclear envelope remaining intact during mitosis. As a consequence of this, the microtubules that coordinate  
174 mitosis are formed from a microtubule organising centre (MTOC) embedded within the nuclear envelope.  
175 Similarly to the use of NHS ester to identify the conoid of ookinetes, the coupling of U-ExM and NHS ester  
176 was used to define the bipartite nuclear MTOC of *Plasmodium* (Liffner and Absalon 2021, Simon, Funaya et  
177 al. 2021). Using U-ExM along with other advanced imaging modalities, it has recently been shown in asexual  
178 blood-stage parasites (Liffner and Absalon 2021, Simon, Funaya et al. 2021, Liffner, Cepeda Diaz et al. 2023)  
179 and gametocytes (Li, Shami et al. 2022, Rashpa and Brochet 2022) that the nuclear MTOC is comprised of an  
180 intranuclear region and a cytoplasmic extension(s). Until the advent of U-ExM, the only marker of the nuclear  
181 MTOC for light microscopy were anti-centrin antibodies. Anti-centrin antibodies, and likely all 4 centrin  
182 proteins encoded in *Plasmodium*, however, have recently been shown to localise exclusively to the  
183 cytoplasmic extension of the bipartite nuclear MTOC (Simon, Funaya et al. 2021, Liffner, Cepeda Diaz et al.  
184 2023, Voß, Klaus et al. 2023).

185 One finding of the study that first characterised the nuclear MTOC of *Plasmodium* by U-ExM was that  
186 microtubules could be observed before centrin (Simon, Funaya et al. 2021). This suggested that centrin was

not required for nuclear microtubule polymerisation, but raised the question of when the nuclear MTOC was formed. A study that tracked a number of *P. falciparum* markers across the asexual blood-stage of the lifecycle, which used NHS ester and centrin as markers for the MTOC, subsequently showed that the intranuclear portion of the MTOC was built before the cytoplasmic extensions (Liffner, Cepeda Diaz et al. 2023). This showed that the intranuclear portion of the MTOC is built before the cytoplasmic extensions, and that only the intranuclear portion is necessary for the nucleation of intranuclear microtubules. Additionally, it was shown that the MTOC is not observable in fully-formed merozoites or newly-invaded ring-stage parasites (Liffner, Cepeda Diaz et al. 2023), suggesting that the MTOC disassembles prior to egress and forms *de novo* following reinvasion.

While the cytoplasmic portion of the nuclear MTOC is not required for making the microtubules that coordinate mitosis, it has subsequently been shown that they nucleate cytoplasmic microtubules (Li, Shami et al. 2022, Rashpa and Brochet 2022, Liffner, Cepeda Diaz et al. 2023). In asexual blood stages, the SPMTs that define merozoites seem to emerge from the cytoplasmic extensions of the MTOC (Liffner, Cepeda Diaz et al. 2023). Further, the SPMTs of both gametocytes and gametes have been shown to emerge from the MTOC cytosolic extensions (Li, Shami et al. 2022, Rashpa and Brochet 2022). Collectively, this highlights the nuclear MTOC as both a bipartite and bifunctional structure, with the intranuclear portion nucleating the microtubules that coordinate mitosis and the cytoplasmic extensions nucleating SPMTs.

#### The nuclear MTOC as a hub for cellular organisation.

In addition to its potential role in nucleating SPMTs, U-ExM studies have suggested that the cytoplasmic extensions of the nuclear MTOC may act as a global hub for cellular organisation (Liffner, Cepeda Diaz et al. 2023, Rashpa, Klages et al. 2023). Using U-ExM, the cytoplasmic extensions of the MTOC were found in a small region between the nuclear envelope and parasite plasma membrane (PPM) (Liffner, Cepeda Diaz et al. 2023). This led to the suggestion that the nuclei of asexual blood stage parasites are anchored in place to the PPM by the MTOC (Liffner, Cepeda Diaz et al. 2023). Temporally, this seems to occur when parasites start to undergo mitosis, with nuclei appearing anchored to the PPM from the onset of mitosis until part way through segmentation (Liffner, Cepeda Diaz et al. 2023).



When the MTOC first anchors to the PPM, there does not appear to be any other recognisable structures or organelles in the space between the nucleus and PPM. Eventually, however, this small area will go on to define the apical end of the forming merozoites (Liffner, Cepeda Diaz et al. 2023, Rashpa, Klages et al. 2023). Not long after nucleus anchoring, each MTOC is accompanied by a Golgi. Subsequently, the apical polar ring and rhoptries undergo their biogenesis in this small space between the PPM and nuclear envelope (Liffner, Cepeda Diaz et al. 2023). Marking the start of segmentation, the basal complex and inner-membrane complex (IMC) also undergo their biogenesis in this confined space (Liffner, Cepeda Diaz et al. 2023), turning an area of the cell that previously lacked any recognisable structures into the highly organised forming end of a merozoite. Once the parasite has begun segmentation, a branch of both the apicoplast and mitochondrion will closely associate with the cytoplasmic extension of the MTOC and subsequently these organelles will undergo fission (Liffner, Cepeda Diaz et al. 2023). It is tempting to speculate that these interactions anchor the apicoplast and mitochondrion within the forming merozoite, subsequently triggering their fission. Collectively, these events establish the nuclear MTOC as hub, around which merozoites are built. Additionally, as the schizont lacks obvious polarity prior to the anchoring of the nucleus, it is possible that the attachment of the MTOC to the PPM establishes regions of polarity within the schizont that will go on to define the apical end of its merozoites.

#### Mitosis and meiosis at subnuclear resolution.

*Plasmodium* parasites undergo closed mitosis (Gerald, Mahajan et al. 2011), where the nuclear envelope does not break down during mitosis, followed by nuclear division, and so with uncondensed chromosomes, so mitosis progress cannot be assessed using DNA dyes. During the replicative stages of the *Plasmodium* lifecycle, the parasite undergoes mitosis or nuclear division in at least 3 distinct ways. Asexual blood-stage parasites undergo schizogony, where nuclei undergo rounds of mitosis followed by nuclear division in a shared cytoplasm (Voß, Klaus et al. 2023). During male gametogenesis, the parasite undergoes three rounds of mitosis without nuclear division, creating an 8n nucleus that undergoes combined nuclear and cell division to form 8 gametes (Matthews, Duffy et al. 2018). It has recently been shown that during sporogony in oocysts, large nuclei likely contain multiple genome copies (Araki, Kawai et al. 2020), but the dynamics of mitosis and nuclear division in this stage of the lifecycle are yet to be elucidated.

One of the major challenges of investigating mitosis and meiosis in *Plasmodium* is a lack of available tools to study these processes. As *Plasmodium* undergoes closed mitosis, and some stages of the lifecycle contain multiple genome copies in a single nucleus, a marker of the nuclear envelope is of clear importance. Prior to U-ExM, however, no markers or stains discernibly and uniformly marked the nuclear envelope. To address this, a lipid stain BODIPY ceramide was applied to parasites following U-ExM (Liffner and Absalon 2021). Using BODIPY ceramide, the authors were able to observe many membranous structures within the parasite but most notably the nuclear envelope (Liffner and Absalon 2021). Leveraging this development, they studied the function of minichromosome maintenance binding protein (MCMBP), where they showed that knockdown lead to aneuploidy and the formation of anaphase chromatin bridges (Liffner and Absalon 2021).

As DNA staining does not indicate mitotic/meiotic stage due to the uncondensed chromosomes of *Plasmodium*, this must be inferred from protein markers. Using U-ExM, a recent study validated a number of kinetochore markers that can be used to infer the position of chromosomes during mitosis and meiosis (Brusini, Dos Santos Pacheco et al. 2022). These markers allowed the authors to visualise chromosomes lining up on the metaphase plate, along with their separation during meiosis and mitosis of both gametocytes and asexual blood stages (Brusini, Dos Santos Pacheco et al. 2022). The ability to infer the position of individual chromosomes and kinetochores will have a significant impact on our understanding of the dynamics of mitosis and meiosis in malaria parasites in future. Further, these observations provide a platform for the characterisation of proteins involved in mitosis and meiosis, with a recent study using U-ExM to show that End-binding protein 1 (EB1) mediates microtubule-kinetochore attachment during mitosis of gametocytes (Yang, Cai et al. 2023).

Of the organisms discussed in this review, U-ExM has been applied to by far the greatest diversity of lifecycle stages in *Plasmodium*. At present, nearly the entire *Plasmodium* lifecycle has been visualised using U-ExM (Figure 2). This exemplifies the adaptability of U-ExM to different sample types, and the transferability of observations between lifecycle stages. A comprehensive list of all proteins localised in *Plasmodium* to date can be found in Table 1.

268 *Toxoplasma gondii* can infect almost any nucleated cell of any warm-blooded animal but it undergoes  
269 sexual replication in the intestine of felines, its definitive host (Tenter, Heckeroth et al. 2000). Animals can be  
270 infected by either the cyst or oocyst stage of the lifecycle, cysts contain invasive parasite stages known as  
271 bradyzoites, while oocysts contain invasive parasite stages known as sporozoites (Hill and Dubey 2002).  
272 When a non-felid animal is infected by an oocyst, the oocyst releases sporozoites, which differentiate into  
273 tachyzoites and invade host cells (Carruthers and Boothroyd 2007). Following host cell invasion, tachyzoites  
274 can either replicate asexually to form daughter tachyzoites that will egress from the host cell and invade a new  
275 host cell, or differentiate into bradyzoites (Lyons, McLeod et al. 2002). Bradyzoites form tissue cysts, and  
276 when these cysts are ingested by another non-felid animal the cysts release the bradyzoites to invade host cells,  
277 differentiate into tachyzoites and repeat this cycle (Hill and Dubey 2002). When a felid is infected by an oocyst,  
278 the sporozoites will differentiate first into tachyzoites and subsequently bradyzoites. Differentiated  
279 bradyzoites from the oocyst, or ones that come directly from tissue cysts, can then differentiate into either  
280 tachyzoites, or sexual stage gametocytes in the intestinal epithelium of the felid (Lourido 2019). Male and  
281 female gametocytes can fuse to form a diploid zygote, which will subsequently undergo meiosis to form a  
282 haploid oocyst (Martorelli Di Genova and Knoll 2020). This oocyst will then be shed from the felid to reinitiate  
283 the infectious cycle in another animal.

284

285 *U-ExM in Toxoplasma*

286 Of the three genera of parasites discussed in this review, expansion microscopy has been the most  
287 widely applied in *Toxoplasma*, with seven different research groups having published using the technique.  
288 Overall, U-ExM experiments on *Toxoplasma* to date have heavily focussed on the parasite cytoskeleton, but  
289 more recent studies have started exploring other aspects of parasite cell biology. Importantly for users of U-  
290 ExM, and other derivative expansion techniques, the tachyzoite conoid is used as a ‘molecular ruler’ to assess  
291 expansion factor because of its highly defined dimensions (Louvel, Haase et al. 2022).

292

293 Defining the components and function of the *Toxoplasma* conoid.

294       The past few years have seen tremendous efforts to define the apical end of *Toxoplasma* tachyzoites  
295 in incredible detail, using a variety of imaging modalities (Mageswaran, Guérin et al. 2021, Segev-Zarko,  
296 Dahlberg et al. 2022, Sun, Segev-Zarko et al. 2022, Li, Du et al. 2023). At the apical end of a tachyzoite is the  
297 conoid, a barrel-shaped structure comprised of angled tubulin fibres and containing a further two intraconoidal  
298 microtubules (Dos Santos Pacheco, Tosetti et al. 2020). On its apical end, the conoid is flanked by the  
299 preconoidal rings (PCRs), while on its basal end the conoid is flanked by the apical polar rings (APRs) (Dos  
300 Santos Pacheco, Tosetti et al. 2020). The APRs form the apex of the parasite's inner-membrane complex, and  
301 are where the subpellicular microtubules (SPMTs) that define its shape are nucleated from. When tachyzoites  
302 are intracellular the conoid is retracted, but when parasites are extracellular the conoid is extruded, allowing  
303 parasite motility and invasion.

304       From the very first study using U-ExM on *Toxoplasma*, it was clear that it was going to serve as a  
305 powerful tool for defining the proteins that comprise the apical end of the parasite, and importantly  
306 characterising their mutants. In this study, the authors utilised U-ExM to refine the localisation of a number  
307 of apical cap (AC) proteins (Tosetti, Dos Santos Pacheco et al. 2020). In doing so, they immediately  
308 recognised the tremendous ability of U-ExM to visualise the parasite cytoskeleton and also to unequivocally  
309 define whether the conoid was retracted or extruded. Uniquely, AC9 and AC10 were localised specifically to  
310 the space between the SPMTs and their knockdown led to significant cytoskeletal defects (Tosetti, Dos Santos  
311 Pacheco et al. 2020). Since this study, 23 proteins have been localised to either the PCRs, conoid, or APRs of  
312 *Toxoplasma*, highlighting the utility of this technique for precise protein localisation.

313       Importantly, the ability to visualise all the different regions at the apical end of tachyzoites gave the  
314 ability to characterise mutants that deform these structures. A recent study localised a number of proteins to  
315 the different subregions of the tachyzoite apical end, including 5 new PCR proteins, and functionally  
316 characterised 10 of them using knockdown parasites (Dos Santos Pacheco, Brusini et al. 2022). Specifically,  
317 the authors assessed conoid extrusion using U-ExM and found 7 proteins whose knockdown inhibited parasite  
318 motility and conoid extrusion (Dos Santos Pacheco, Brusini et al. 2022). Curiously, the authors also  
319 characterised homologues of two of these proteins in *P. berghei* ookinetes, and showed that both localise at

the conoid, with knockdown inhibiting ookinete motility and decreasing the distance between the conoid and APR; a likely equivalent of inhibiting conoid extrusion (Dos Santos Pacheco, Brusini et al. 2022). Collectively, using U-ExM the authors defined a new hypothetical model for the process and function of conoid extrusion. When the conoid is extruded, actin flux occurs from the apical end the conoid and accumulates between the parasite plasma membrane (PPM) and inner-membrane complex (IMC) before moving to the basal end of the parasite to generate its actin-based motility. When the conoid is retracted, the PCRs prevent the flux of actin through the space between the PPM and IMC, therefore inhibiting actin-based motility and making conoid extrusion essential for motility (Dos Santos Pacheco, Brusini et al. 2022).

The flexibility of visualising a range of conoid-localising proteins using antibodies or tags, along with the ability to assess changes to the conoid by U-ExM, demonstrate the usefulness of U-ExM for investigating the role of proteins that define parasite ultrastructure.

### A closer view of the centrosome and kinetochore of *Toxoplasma*.

Investigating mitosis in *Toxoplasma* is challenging for many of the same reasons as described previously for *Plasmodium*. During the tachyzoite stage of the lifecycle, *Toxoplasma* divides through a process called endodyogeny. In brief, the genome of a mother parasite will duplicate and undergo closed mitosis, with nuclear fission partitioning sister nuclei into two daughter cells that form within the mother (Gubbels, Keroack et al. 2020). During mitosis, and the early stages of daughter cell formation, the two forming daughter buds can be difficult to distinguish from both each other, and the mother parasite; complicating study of *Toxoplasma* mitosis by light microscopy.

Two separate studies have shown that using U-ExM and a combination of antibodies against tubulin and markers of either the centrosome or kinetochore, the stages of mitosis in tachyzoites can be precisely defined (Brusini, Dos Santos Pacheco et al. 2022, Tomasina, Gonzalez et al. 2022). By observing these stages of mitosis, the authors of each study were then able to characterise localisation of proteins during mitosis and characterise their role in mitosis.

The first of these studies focussed on describing new markers of the kinetochore and their relative positions during mitosis (Brusini, Dos Santos Pacheco et al. 2022). Incredibly, the authors were not only able

346 to distinguish between markers of the kinetochore and centromeric proteins, but also able to define the position  
347 of proteins in sub-kinetochore compartments (Brusini, Dos Santos Pacheco et al. 2022). As the alignment of  
348 chromosomes along the metaphase plate, and their subsequent separation, could now be visualised, the authors  
349 subsequently characterised knockdown mutants of apicomplexan kinetochore protein 1 (AKiT1) and  
350 centromere protein C (CENP-C). Following either AKiT1 or CENP-C knockdown, it could be seen that  
351 chromosomes fail to properly align along the metaphase plate and then fail to separate appropriately during  
352 anaphase (Brusini, Dos Santos Pacheco et al. 2022). The ability to characterise the function of proteins  
353 involved in mitosis at this specificity represents a tremendous advance in parasite cell biology and will  
354 undoubtedly lead to a significant increase in our understanding of parasite mitosis in the future.

355 The tachyzoite centrosome is comprised of an outer core that contains two centrioles and a centriole-  
356 free inner core, which opposes a nuclear envelope elaboration called the centrocone. The second of these two  
357 studies assessed the role of the centrosome inner core on mitosis (Tomasina, Gonzalez et al. 2022). Using U-  
358 ExM, the authors showed that the only known marker of the inner core Cep250L1 gets duplicated and  
359 separated during mitosis. Subsequently, they generated Cep250L1 knockdown parasites and showed that upon  
360 Cep250L1 depletion, parasites have a reduced ability to form their mitotic spindle (Tomasina, Gonzalez et al.  
361 2022). This suggests that the inner core of the tachyzoite centrosome, which previously had no known function,  
362 is involved in regulating mitotic spindle assembly. Collectively, these two studies highlight the utility of U-  
363 ExM to study parasite mitosis, and functionally characterise proteins involved in the process.

#### 364 Visualising interactions between organelles.

365 The organelles within a parasite are not static or standalone structures, instead they are constantly  
366 morphing and interacting with each other. Investigating inter-organelle interactions, principally mediated by  
367 membrane contact sites, is a relatively but rapidly growing new area of parasite cell biology. A recent study  
368 investigated the interaction between the inner-membrane complex and mitochondrion of tachyzoites using U-  
369 ExM (Oliveira Souza, Jacobs et al. 2022). In intracellular parasites, the mitochondrion typically adopts a  
370 ‘lasso-like’ shape around the nucleus and knockout of an outer mitochondrial membrane protein known as  
371 lasso maintenance factor 1 (LMF1) has been shown disrupt this shape (Jacobs, Charvat et al. 2020).  
372 Surprisingly, when the authors looked for LMF1 interactors, their top hits were proteins of the inner-

373 membrane complex including IMC10 (Oliveira Souza, Jacobs et al. 2022). Using U-ExM, the authors showed  
374 that LMF1 localises in close proximity to the IMC, appearing to form a bridge between the mitochondrion  
375 and IMC (Oliveira Souza, Jacobs et al. 2022). Subsequently, the authors showed that IMC10 knockdown also  
376 results in defects to mitochondrial morphology (Oliveira Souza, Jacobs et al. 2022). Assessing the interaction  
377 between LMF1 and the IMC during daughter cell formation using U-ExM, the authors suggested that LMF1  
378 and the IMC interact cytokinesis to uniformly distribute mitochondria around the nuclei of daughter cells and  
379 form the characteristic lasso shape (Oliveira Souza, Jacobs et al. 2022). This study demonstrates the power of  
380 U-ExM to interrogate not only single organelles, but the dynamic interactions between different organelles.

381 *Toxoplasma* holds a unique position as the first expanded apicomplexan parasite, with the researchers  
382 who pioneered this technique in *Toxoplasma* tremendously demonstrating how U-ExM can unlock new  
383 avenues to explore in parasite cell biology. A comprehensive list of all proteins localised in *Toxoplasma* to  
384 date can be found in Table 2.

### 385 ***Cryptosporidium***

386 Unlike both *Toxoplasma* and *Plasmodium*, *Cryptosporidium* can undergo its whole life cycle in the  
387 same host. *Cryptosporidium* spp. infect a wide range of animals, but this review will focus on those that infect  
388 mammals, which include the two major human pathogens *C. parvum* and *C. hominis*. *Cryptosporidium* is  
389 transmitted when a host ingests oocysts (Guérin and Striepen 2020). Oocysts contain sporozoites, which will  
390 be released from the oocyst and invade the intestinal epithelium (Guérin and Striepen 2020). Once the  
391 sporozoite has invaded an enterocyte it will form a trophozoite, which will replicate asexually to form a meront  
392 containing 8 merozoites (Guérin and Striepen 2020). Merozoites will egress from the infected cell, reinvade a  
393 new cell and repeat this cycle two times (Guérin and Striepen 2020, English, Guérin et al. 2022). During the  
394 third round of asexual replication, merozoites commit to sexual differentiation and following meront egress,  
395 the merozoites will invade a new host cell to form either a male or female gamont (Tandel, English et al. 2019,  
396 English, Guérin et al. 2022). Male gametes undergo four rounds of mitosis to produce 16 gametes, while  
397 female gamonts differentiate into a single gamete (Guérin and Striepen 2020). Subsequently these gametes  
398 fuse to form a diploid zygote that will undergo meiosis and form an oocyst (Guérin and Striepen 2020).

399 Oocysts can either be shed to infect a new host, or undergo auto-infection within the same host, repeating this  
400 cycle.

401 Relative to our understanding of cell biology in *Toxoplasma* and *Plasmodium*, the investigation of  
402 *Cryptosporidium* cell biology is still in its infancy. In large part, this is due to the fact that until relatively  
403 recently culture, cryopreservation, and genetic manipulation of *Cryptosporidium* were either difficult or not  
404 possible (Guérin and Striepen 2020). In recent years, however, genetically tractable, and culturable systems  
405 for *Cryptosporidium* have been developed (Vinayak, Pawlowic et al. 2015, Heo, Dutta et al. 2018, Jaskiewicz,  
406 Sandlin et al. 2018, Sateriale, Šlapeta et al. 2019, Wilke, Funkhouser-Jones et al. 2019). Consequently, we  
407 have seen a long-overdue explosion in our understanding of *Cryptosporidium* biology. In only the last few  
408 years, an impressive array of microscopy techniques including live cell microscopy (Guérin, Roy et al. 2021,  
409 English, Guérin et al. 2022), structured illumination microscopy (SIM) (Choudhary, Nava et al. 2020, Guérin,  
410 Roy et al. 2021), stimulated emission depletion (STED) microscopy (Guérin, Roy et al. 2021), cryo-electron  
411 tomography (Mageswaran, Guérin et al. 2021), and most recently U-ExM (Guérin, Strelau et al. 2023), have  
412 been employed to better understand *Cryptosporidium* cell biology.

### 413 *U-ExM in Cryptosporidium*

#### 414 Visualising the spatial proteome of *Cryptosporidium*.

415 A significant advance in our understanding of *Cryptosporidium* biology was achieved with the recent  
416 publication of the spatial proteome of *C. parvum* (Guérin, Strelau et al. 2023). Using a technique known as  
417 hyperplexed localisation of organelle proteins by isotope tagging (hyperLOPIT) (Christoforou, Mulvey et al.  
418 2016), the authors localised 1,107 proteins to different organelles or structures within *Cryptosporidium*  
419 sporozoites. The output of hyperLOPIT clusters proteins based on fraction extraction profiles, as proteins in  
420 the same organelles will have similar extraction profiles. Proteins in the dataset with known localisations can  
421 then be used to identify which organelles or structures the observed clusters represent. To validate this data,  
422 the authors picked proteins predicted to localise to the micronemes or rhoptry neck and performed  
423 colocalisation with known markers for these organelles (Guérin, Strelau et al. 2023). In addition, the authors  
424 performed U-ExM on sporozoites coupled with NHS ester staining, which clearly revealed the rhoptry, conoid,  
425 crystalloid body and dense granules (Figure 1). The use of U-ExM coupled with NHS ester was proved



426 invaluable, as previously there were no antibodies that could be used as markers for either crystalloid body or  
427 dense granules. This allowed the authors to validate four new dense granules proteins and one new crystalloid  
428 body protein (Guérin, Strelau et al. 2023). Use of NHS ester with U-ExM in *Cryptosporidium* is likely to  
429 continue to be extremely useful in future, due to the relative dearth of marker-specific antibodies that are  
430 commonly or commercially available.

#### 431 Identification of two secretory organelles in *Cryptosporidium*, dense granules and small granules.

432 Based on the hyperLOPIT data, the authors observed two clusters of proteins distinct from dense  
433 granule clusters predicted to be secreted that contained no marker proteins, and tagged a protein from each of  
434 these clusters to investigate their localisation (Guérin, Strelau et al. 2023). Using U-ExM coupled with NHS  
435 ester, the authors showed that both proteins were found in several small vesicles near the nucleus that were  
436 distinct from the dense granules. This organelle was termed the small granules, and was subsequently shown  
437 to be secreted following host cell invasion (Guérin, Strelau et al. 2023). Curiously, some proteins predicted to  
438 localise to the small granules proteins are conserved in other Apicomplexa, but whether other Apicomplexa  
439 have these secretory organelles is not yet known. Collectively, this highlights the utility of U-ExM not only  
440 for performing detailed colocalisation studies, but also highlights its ability to reveal structures previously not  
441 visible by conventional light microscopy.

442 Due to the power of U-ExM for identifying organelles without protein-specific stains, it is likely that  
443 of the three genera of parasites discussed in this review, U-ExM has the greatest ability to lead to significant  
444 advances in our understanding of *Cryptosporidium* biology. A comprehensive list of all proteins localised in  
445 *Cryptosporidium* to date can be found in Table 3.

#### 446 **Observed drawbacks and limitations of U-ExM in Apicomplexa.**

447 Like any imaging modality, U-ExM is accompanied by some limitations and artefacts. It is important,  
448 however, for early adopters of U-ExM to recognise these limitations and artefacts and share these findings  
449 with the community. To date, the most notable limitation occurs in blood-stage malaria parasites that  
450 biomineralize haem into a crystal called haemozoin (Matz 2022). The large haemozoin crystal in the centre of  
451 the parasite either does not expand, or does not get anchored to the gel, leaving a large empty space in the

food vacuole where it previously resided (Liffner, Cepeda Diaz et al. 2023). Considering this, any observations about the parasite food vacuole should be made with caution as we know it has been altered a non-physiologically relevant way. Curiously, it has also been observed that non-specific antibody fluorescence accumulates in the region of the cell that used to contain the haemozoin crystal (Liffner, Cepeda Diaz et al. 2023).

To date, U-ExM in apicomplexan parasites has only been used to study cultured cells, but U-ExM is applicable to tissues or whole organs. Considering this, we will likely in future see publications that visualise parasites *in situ*, performing U-ExM on intestinal sections containing *Toxoplasma* or *Cryptosporidium*, or whole expanded salivary glands or midguts from *Plasmodium* infected mosquitoes. One significant challenge this is likely to impose is that it will significantly increase the depth into the gel that you need to image to capture your sample. In our experience, the sample is always brightest at the surface of the gel closest to the objective lens and becomes progressively dimmer the deeper into the gel you image; which is to be expected as working distance increases. While imaging of parasites *in situ* will likely be possible irrespective of this limitation, it will prevent imaging of entire organs or tissues using conventional confocal or widefield microscopy. Imaging modalities such as light sheet or lattice light sheet fluorescence microscopy (Stelzer, Strobl et al. 2021), where the sample is more evenly illuminated could likely overcome this hurdle and provide high-resolution expanded images of tissues or organs infected with parasites.

While U-ExM is extremely useful for revealing previously indistinguishable structures, it is likely not compatible with absolute fluorescence quantification. Absolute fluorescence quantification (where two different samples are compared to each other), like in colocalisation studies for example, is complicated because of the variables that need to be controlled for. In U-ExM, there is a small difference between the expansion factors of gels, with reported ranges of between 3.9 and 4.3-fold expansion and currently (Gambarotto, Zwettler et al. 2019, Bertiaux, Balestra et al. 2021, Liffner and Absalon 2021, Liffner, Cepeda Diaz et al. 2023), there is no way to control for this variance. Compounding this problem is the previously mentioned issue about cells deeper into the gel not being as bright as those at the imaging surface. Further, it is currently unclear how much gel-to-gel variation there is in fluorescence intensity, or whether fluorescence intensity is influenced by position within the gel.

While >80 proteins have been localised in Apicomplexa by U-ExM using either protein-specific antibodies or tagged proteins (Tables 1-3), authors have described not being able to localise a small number of proteins using U-ExM. For U-ExM, the sample is completely denatured and so antibodies will be encountering linear epitopes, while in conventional immunofluorescence assays the antibodies would typically encounter conformational epitopes. Considering this, it is unsurprising that some proteins that are readily localised using conventional immunofluorescence assays can sometimes not be localised using U-ExM. To the best of our knowledge, only two apicomplexan proteins have been published as not being localisable by U-ExM; MCMBP in *P. falciparum* (Liffner and Absalon 2021) and CCP1 in *Cryptosporidium* (Guérin, Strelau et al. 2023).

### **Potential future applications and emerging expansion microscopy techniques.**

U-ExM has already had a drastic influence on our understanding of cell biology in apicomplexan parasites, but expansion microscopy is a rapidly evolving technique. Additionally, due to its relatively recent application to apicomplexan parasites, there are some well-studied aspects of parasite cell biology that have not yet been interrogated using U-ExM. In the final few paragraphs of this review, we will summarise emerging expansion microscopy techniques and speculate on areas of apicomplexan cell biology where U-ExM could provide breakthroughs.

#### *Expanding even further.*

The original expansion protocol and its derivatives, including U-ExM, result in approximately 4-fold linear expansion of the sample (Chen, Tillberg et al. 2015, Gambarotto, Zwettler et al. 2019, Wassie, Zhao et al. 2019). More recently, however, protocols have been developed that substantially increase the expansion factor from 10 to ~25-fold linear expansion (Truckenbrodt, Maidorn et al. 2018, M'Saad and Bewersdorf 2020, Damstra, Mohar et al. 2022, Louvel, Haase et al. 2022, Klimas, Gallagher et al. 2023, Shaib, Chouaib et al. 2023). This >4-fold expansion has been achieved in a number of ways including using more swellable hydrogels (Damstra, Mohar et al. 2022), and performing iterative expansion where an already expanded hydrogel is expanded again (M'Saad and Bewersdorf 2020, Louvel, Haase et al. 2022). An iterative expansion microscopy technique known as iterative U-ExM (iU-ExM) has already been applied to *T. gondii*, where the individual microtubules that comprise the conoid were observed; something previously only seen using

electron microscopy (Louvel, Haase et al. 2022). These next-generation expansion microscopy techniques will likely be extremely useful for answering questions about highly protein dense structures not readily resolved by U-ExM, such as the conoid. 25-fold linear expansion, however, corresponds to >10,000-fold volumetric expansion, which would decrease protein concentration so much that many proteins/stains may become impossible to visualise. We think that iU-ExM, and other expansion techniques that expand beyond 4-fold will be extremely useful for determining whether there is subcompartmentalisation of proteins within protein-dense structures. Considering this, some logical candidates to investigate using these techniques are the basal complex, apical polar rings, nuclear MTOC, and nuclear pore complexes.

#### *Multiplexing expansion microscopy.*

Perhaps the most exciting avenue for future development of expansion microscopy-based techniques is the ability to combine ExM with other kinds of experiments. Fluorescence *in situ* hybridisation (FISH) experiments have been a mainstay of nucleic acid biology for many years. Protocols have been developed that enable both DNA (Klimas, Gallagher et al. 2023) and RNA (Chen, Wassie et al. 2016) FISH on expanded samples, opening the possibility of studying individual genomic loci or RNAs on expanded parasites. Omics technologies have also recently been combined with expansion microscopy, with protocols recently published to perform *in situ* spatial transcriptomics (Alon, Goodwin et al. 2021) and proteomics (Li, Sun et al. 2022) on expanded samples. These techniques are not yet at the level of single-cell transcriptomics or proteomics, but we can imagine this kind of technique being applied to decipher a single-cell transcriptome or proteome of something like the *P. vivax* hypnozoite.

#### *Nature vs nurture.*

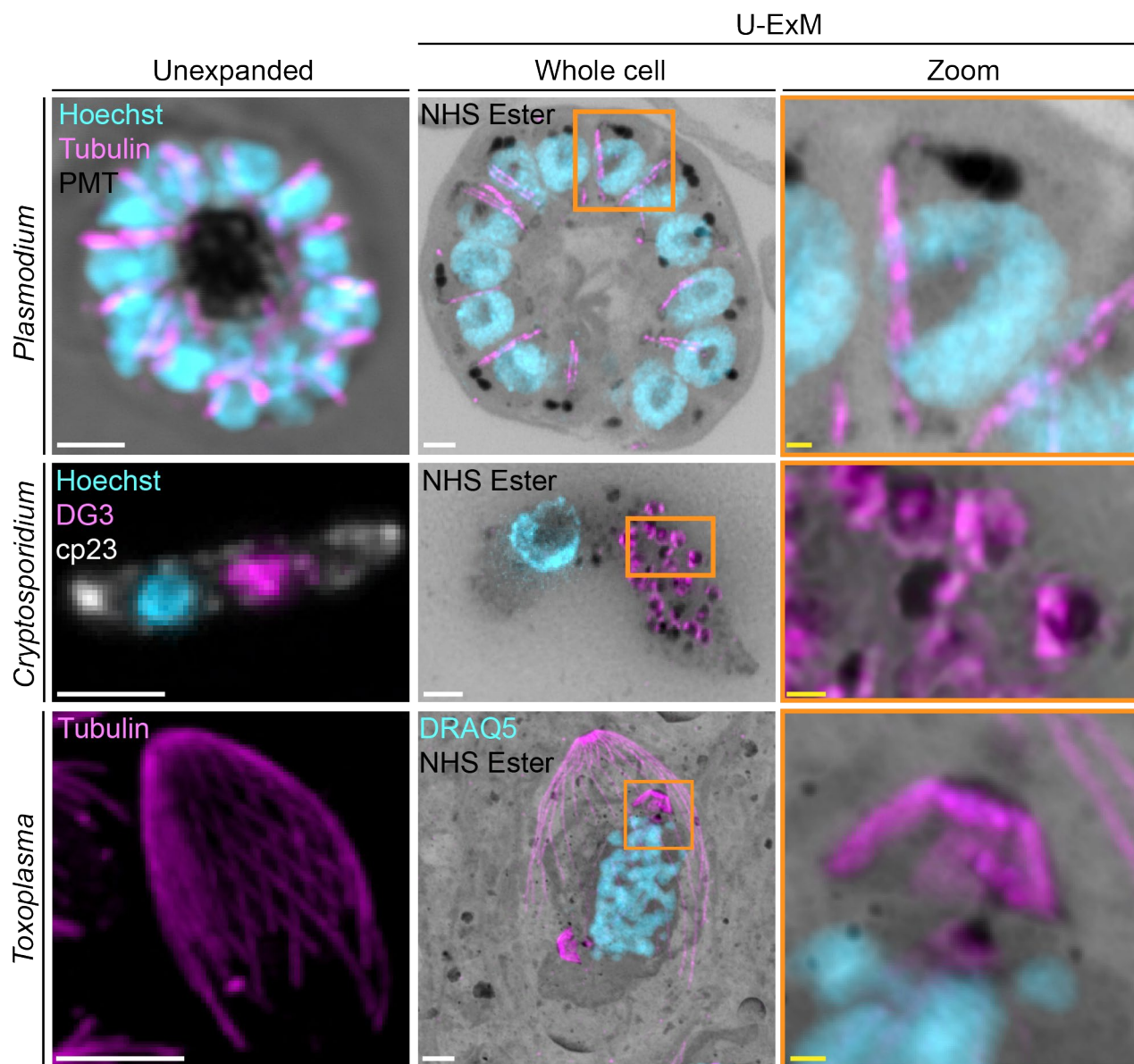
The last few years have seen the publication of groundbreaking studies that allow for the *in vitro* production of infectious *Plasmodium* sporozoites (Eappen, Li et al. 2022) and *Toxoplasma* cat-restricted sexual stages (Antunes, Shahinas et al. 2023). U-ExM could be used to compare the ultrastructure of these *in vitro* generated parasites against their *in vivo* generated counterparts to define the ways in which they are both similar and different. The advantage of U-ExM over electron microscopy in this context, would be the ability to sample hundreds of cells in three-dimensions, at different stages of their development/differentiation, and do so with antibodies against proteins of interest.

533 *Reimagining invasion.*

534 Host cell invasion is one of the most well studied processes in apicomplexan cell biology but to the  
535 best of our knowledge, there are no published examples of expanded parasites in the process of invading. It  
536 isn't hard to imagine taking U-ExM and revisiting one of the seminal works on host cell invasion using light  
537 microscopy or electron microscopy (such as Riglar, Richard et al. 2011 for *Plasmodium* or Del Rosario, Periz  
538 et al. 2019 for *Toxoplasma*). To date, U-ExM has not significantly altered our view of host cell invasion by  
539 apicomplexan parasites, but we think this is very likely to change in the near future.

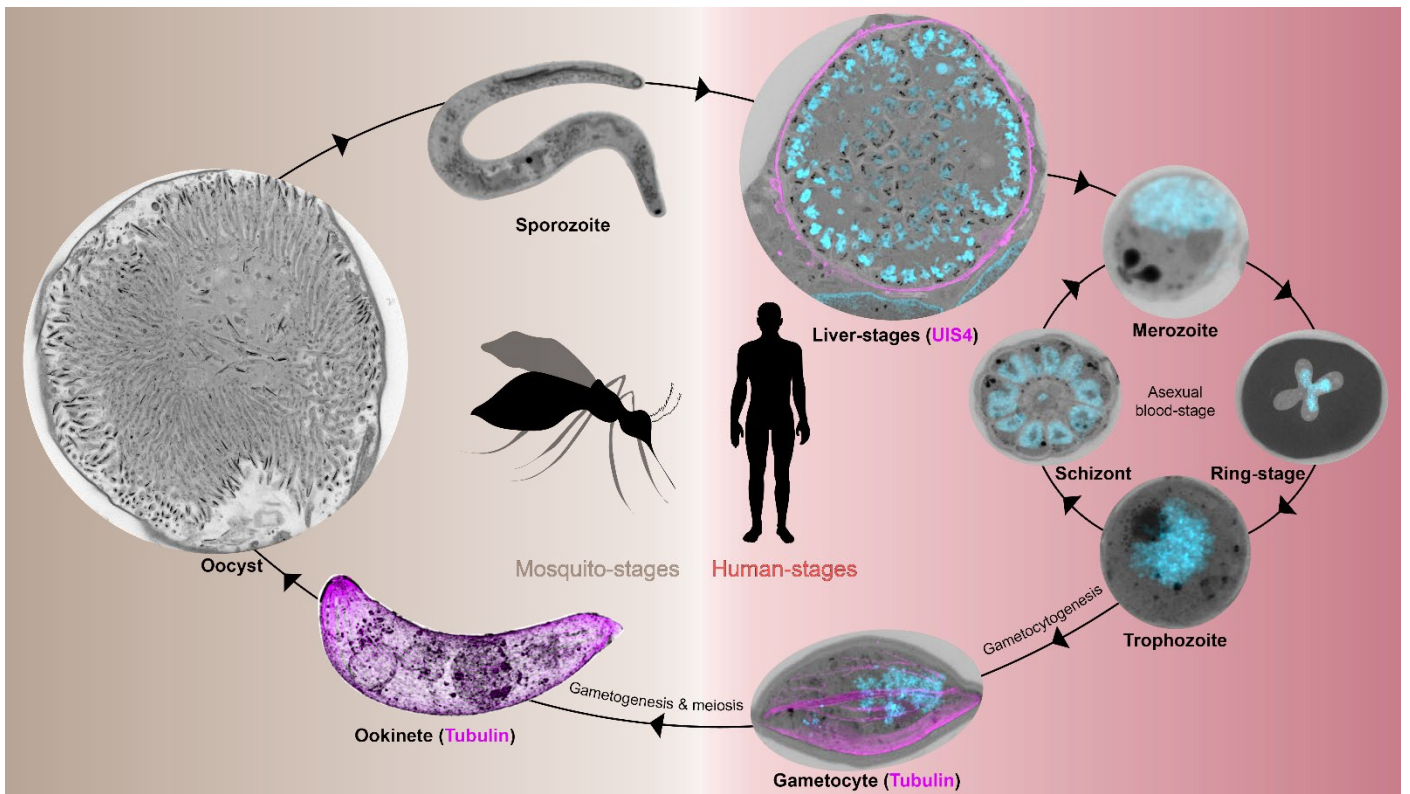
540 *Expanding the world.*

541 This review has focussed primarily on studies in *P. falciparum*, *P. berghei*, *P. yoelii*, *T. gondii* and *C.*  
542 *parvum* largely because there are well-established culture systems for these organisms. Perhaps the biggest  
543 strength of U-ExM, however, is that when it is coupled with general stains such as NHS ester or BODIPY  
544 ceramide, we can learn a great deal about the cell biology of organisms we cannot genetically manipulate and  
545 for which we lack protein-specific antibody. In 2023, a groundbreaking and ambitious study known as  
546 Traversing European Coastlines (TREC), led by EMBL and the Fondation Tara Océan, began exploring  
547 coastal ecosystems using a wide array of scientific techniques (Ghosh 2022). One of the projects within TREC,  
548 led by a team across EMBL, EPFL and University of Geneva, is to profile diversity of plankton ultrastructure  
549 using cryo-ExM and U-ExM, combined with other imaging modalities such as volume electron microscopy  
550 (Ghosh 2022). In principle, this project plans to explore eukaryotic diversity and take the study of cell biology  
551 beyond the walls of a laboratory. Applying a similar thought process to apicomplexan parasites, one could  
552 imagine using U-ExM to look at the ultrastructure of malaria parasites inside field-caught mosquitoes,  
553 haemosporidian parasites in blood samples from wildlife, or *Toxoplasma* cysts from livestock animals. The  
554 future of expansion microscopy, and what that means for that will mean for the study of parasite cell biology  
555 is truly exciting.



**Figure 1: Comparison of unexpanded and U-ExM parasites across Apicomplexa.**

Example images of *Plasmodium falciparum* schizonts, *Cryptosporidium parvum* sporozoites and *Toxoplasma gondii* tachyzoites that are either unexpanded, or prepared using U-ExM. For all images DNA stains are represented in cyan. For all U-ExM images, greyscale represents NHS ester (protein density). For *Plasmodium*, magenta represents anti-tubulin (microtubule) staining and zoom region of interest shows a single merozoite from a schizont. For *Cryptosporidium*, magenta represents the dense granule protein DG3, white (unexpanded only) represents the sporozoite antigen Cp23 and zoom region of interest shows individual dense granules. For *Toxoplasma*, magenta represents anti-acetylated tubulin (microtubule) staining and zoom region of interest shows a forming daughter cell. White scale bars = 2  $\mu$ m, yellow scale bars = 500 nm. *Plasmodium* images are derived from the dataset in Liffner, Cepeda Diaz et al. 2023, *Cryptosporidium* images are unpublished images derived the dataset in Guérin, Strelau et al. 2023, and *Toxoplasma* images are from an unpublished dataset.



**Figure 2: An expanded view of the *Plasmodium* lifecycle.**

Generalised *Plasmodium* lifecycle with all represented stages depicted as expanded parasites. For all images greyscale represents protein density (NHS ester) and cyan represents DNA staining (SYTOX deep red). For liver-stages, magenta represents UIS4 (parasitophorous vacuole). For ookinete and gametocyte, magenta represents microtubules. Oocyst and sporozoite images are *P. yoelii* (currently unpublished dataset). Ookinete (replicated with permission from Bertiaux, Balestra et al. 2021) and liver-stages are *P. berghei* (currently unpublished dataset). Asexual blood-stage (from dataset in Liffner, Cepeda Diaz et al. 2023) and gametocyte (currently unpublished dataset) are *P. falciparum*. Images are not depicted to-scale.



| Organism                     | Lifecycle stage      | Antibodies and tagged proteins (subcellular location)        | References                                                                                                                                                                  |
|------------------------------|----------------------|--------------------------------------------------------------|-----------------------------------------------------------------------------------------------------------------------------------------------------------------------------|
| <i>Plasmodium falciparum</i> | Asexual blood stages | Tubulin, PolyE (microtubules)                                | (Bertiaux, Balestra et al. 2021, Liffner and Absalon 2021, Simon, Funaya et al. 2021, Liffner, Cepeda Diaz et al. 2023)                                                     |
|                              |                      | Centrin (MTOC)                                               | (Bertiaux, Balestra et al. 2021, Liffner and Absalon 2021, Simon, Funaya et al. 2021, Liffner, Cepeda Diaz et al. 2023)                                                     |
|                              |                      | BiP (ER)                                                     | (Liffner and Absalon 2021, Liffner, Cepeda Diaz et al. 2023)                                                                                                                |
|                              |                      | ERD2 (Golgi)                                                 | (Liffner, Cepeda Diaz et al. 2023)                                                                                                                                          |
|                              |                      | MitoTracker, ATPd (mitochondrion)                            | (Liffner, Cepeda Diaz et al. 2023)                                                                                                                                          |
|                              |                      | ACP <sup>TS</sup> (apicoplast)                               | (Liffner, Cepeda Diaz et al. 2023)                                                                                                                                          |
|                              |                      | Aldolase (cytoplasm)                                         | (Liffner, Cepeda Diaz et al. 2023)                                                                                                                                          |
|                              |                      | CINCH (basal complex)                                        | (Liffner, Cepeda Diaz et al. 2023)                                                                                                                                          |
|                              |                      | IMC1g, GAP45 (IMC)                                           | (Liffner, Cepeda Diaz et al. 2023)                                                                                                                                          |
|                              |                      | MSP1-19 (PPM)                                                | (Liffner, Cepeda Diaz et al. 2023)                                                                                                                                          |
|                              |                      | Kelch13 (cystosomes)                                         | (Liffner, Cepeda Diaz et al. 2023)                                                                                                                                          |
|                              |                      | RAP1, RON4, RAMA (rhoptries)                                 | (Liffner, Cepeda Diaz et al. 2023)                                                                                                                                          |
|                              |                      | EBA175, AMA1 (micronemes)                                    | (Liffner, Cepeda Diaz et al. 2023)                                                                                                                                          |
| <i>Plasmodium yoelii</i>     | Gametocytes/gametes  | Tubulin (microtubules)                                       | (Rashpa and Brochet 2022)                                                                                                                                                   |
|                              |                      | Actin                                                        | (Rashpa and Brochet 2022)                                                                                                                                                   |
|                              | Asexual blood stages | CDPK1, MSP1 (PPM)                                            | (Qian, Wang et al. 2022)                                                                                                                                                    |
|                              | Ookinetes            | Tubulin, PolyE (microtubules)                                | (Qian, Wang et al. 2022)                                                                                                                                                    |
|                              |                      | SA-488 (APR)                                                 | (Qian, Wang et al. 2022)                                                                                                                                                    |
|                              |                      | APR2 (SPMTs/APR)                                             | (Qian, Wang et al. 2022)                                                                                                                                                    |
| <i>Plasmodium berghei</i>    | Gametocytes/gametes  | Tubulin, PolyE, EB1 (microtubules)                           | (Yang, Cai et al. 2023)                                                                                                                                                     |
|                              |                      | NDC80 (kinetochore)                                          | (Yang, Cai et al. 2023)                                                                                                                                                     |
|                              | Liver stages         | UIS4 (PVM)                                                   | (Atchou, Berger et al. 2023, Calla, Mittal et al. 2023)                                                                                                                     |
|                              | Asexual blood stages | Tubulin, PolyE (microtubules)                                | (Bertiaux, Balestra et al. 2021, Ambekar 2022, Brusini, Dos Santos Pacheco et al. 2022, Rashpa, Klages et al. 2023)                                                         |
|                              |                      | Centrin, FBXO1 (MTOC)                                        | (Bertiaux, Balestra et al. 2021, Ambekar 2022, Brusini, Dos Santos Pacheco et al. 2022, Rashpa, Klages et al. 2023)                                                         |
|                              |                      | NUF2, AKi1 (Kinetochore)                                     | (Brusini, Dos Santos Pacheco et al. 2022)                                                                                                                                   |
|                              |                      | Nup138, Nup313, Nup434 (Nuclear pore complex)                | (Ambekar 2022)                                                                                                                                                              |
|                              | Ookinetes            | Tubulin, PolyE, $\gamma$ -tubulin (microtubules)             | (Bertiaux, Balestra et al. 2021, Brusini, Dos Santos Pacheco et al. 2022, Dos Santos Pacheco, Brusini et al. 2022, Zeeshan, Rashpa et al. 2022, Rashpa, Klages et al. 2023) |
|                              |                      | FXBO1, SKP1, CDPK1 (Pellicle)                                | (Rashpa, Klages et al. 2023)                                                                                                                                                |
|                              |                      | NUF2, SKA2 (Kinetochore)                                     | (Brusini, Dos Santos Pacheco et al. 2022)                                                                                                                                   |
|                              |                      | SAS6-like, MyoB, PCR4, PCR5, GAC (APR)                       | (Bertiaux, Balestra et al. 2021, Dos Santos Pacheco, Brusini et al. 2022)                                                                                                   |
|                              | Sporozoites          | TRAP, CLAMP, AMA1 (micronemes)                               | (Loubens, Marinach et al. 2023)                                                                                                                                             |
|                              | Gametocytes/gametes  | Tubulin, PolyE, $\gamma$ -tubulin, kinesin-13 (microtubules) | (Bertiaux, Balestra et al. 2021, Brusini, Dos Santos Pacheco et al. 2022, Rashpa and Brochet 2022, Zeeshan, Rashpa et al. 2022, Rashpa, Klages et al. 2023)                 |
|                              |                      | AKi1, NUF2 (Kinetochore)                                     | (Brusini, Dos Santos Pacheco et al. 2022)                                                                                                                                   |
|                              |                      | Centrin, SAS4, SAS6 (MTOC)                                   | (Brusini, Dos Santos Pacheco et al. 2022, Rashpa and Brochet 2022, Rashpa, Klages et al. 2023)                                                                              |
|                              |                      | FXBO1, SKP1, FBXL2 (Microtubules/MTOC)                       | (Rashpa, Klages et al. 2023)                                                                                                                                                |
|                              |                      | GEX1 (nuclear envelope)                                      | (Rashpa and Brochet 2022)                                                                                                                                                   |
|                              |                      | Nup138 (Nuclear pore complex)                                | (Ambekar 2022)                                                                                                                                                              |

**Table 1: Summary of all proteins localised by U-ExM using antibodies or tagged cell lines in *Plasmodium*.**



| Organism                 | Lifecycle stage | Antibodies and tagged proteins (subcellular location) | References                                                                                                                                                                                                                                                                                                                                                                                                                             |
|--------------------------|-----------------|-------------------------------------------------------|----------------------------------------------------------------------------------------------------------------------------------------------------------------------------------------------------------------------------------------------------------------------------------------------------------------------------------------------------------------------------------------------------------------------------------------|
| <i>Toxoplasma gondii</i> | Tachyzoites     | Tubulin, AcTub, PolyE, TLAP2 (microtubules)           | (Pavlou, Touquet et al. 2020, Tosetti, Dos Santos Pacheco et al. 2020, Lentini, Ben Chaabene et al. 2021, Pacheco, Tosetti et al. 2021, Brusini, Dos Santos Pacheco et al. 2022, Dave, LaFavers et al. 2022, Dos Santos Pacheco, Brusini et al. 2022, Louvel, Haase et al. 2022, Montano, Anandkrishnan et al. 2022, Severo, Souza et al. 2022, Sparvoli, Delabre et al. 2022, Tomasina, Gonzalez et al. 2022, Yang, Doud et al. 2023) |
|                          |                 | GAP45, MyoA, IMC3 & 10 (inner membrane complex)       | (Pavlou, Touquet et al. 2020, Oliveira Souza, Jacobs et al. 2022)                                                                                                                                                                                                                                                                                                                                                                      |
|                          |                 | NUF2, SKA1, SKA2, AKiT1, CENP-C (kinetochore)         | (Brusini, Dos Santos Pacheco et al. 2022, Tomasina, Gonzalez et al. 2022)                                                                                                                                                                                                                                                                                                                                                              |
|                          |                 | Chromo1 (centromere)                                  | (Brusini, Dos Santos Pacheco et al. 2022)                                                                                                                                                                                                                                                                                                                                                                                              |
|                          |                 | Centrin1, EB1, Cep250L1 (MTOC)                        | (Brusini, Dos Santos Pacheco et al. 2022, Tomasina, Gonzalez et al. 2022)                                                                                                                                                                                                                                                                                                                                                              |
|                          |                 | RNG2 (APRs)                                           | (Tosetti, Dos Santos Pacheco et al. 2020)                                                                                                                                                                                                                                                                                                                                                                                              |
|                          |                 | CRMPa & b, AC2,8,9 & 10 (Apex)                        | (Tosetti, Dos Santos Pacheco et al. 2020, Pacheco, Tosetti et al. 2021, Sparvoli, Delabre et al. 2022)                                                                                                                                                                                                                                                                                                                                 |
|                          |                 | FRM1, AKMT, GAC, PCR1,4,5,6 & 7, PPKL (PCRs)          | (Dos Santos Pacheco, Brusini et al. 2022, Yang, Doud et al. 2023)                                                                                                                                                                                                                                                                                                                                                                      |
|                          |                 | Centrin 2 (Apical annuli/PCRs)                        | (Tosetti, Dos Santos Pacheco et al. 2020, Dos Santos Pacheco, Brusini et al. 2022)                                                                                                                                                                                                                                                                                                                                                     |
|                          |                 | MyoH, AKMT, SAS6L, DCX, CPH1 (Conoid)                 | (Dos Santos Pacheco, Brusini et al. 2022, Louvel, Haase et al. 2022)                                                                                                                                                                                                                                                                                                                                                                   |
|                          |                 | RON2,3,4,9,13 (Rhoptries)                             | (Lentini, Ben Chaabene et al. 2021, Pacheco, Tosetti et al. 2021)                                                                                                                                                                                                                                                                                                                                                                      |
|                          |                 | EFP1 (Golgi/Plant-like vacuole)                       | (Dave, LaFavers et al. 2022)                                                                                                                                                                                                                                                                                                                                                                                                           |
|                          |                 | LMF1 (Mitochondrion)                                  | (Oliveira Souza, Jacobs et al. 2022)                                                                                                                                                                                                                                                                                                                                                                                                   |
|                          |                 | Cpn60 (Apicoplast)                                    | (Tomasina, Gonzalez et al. 2022)                                                                                                                                                                                                                                                                                                                                                                                                       |
|                          |                 | Actin                                                 | (Dos Santos Pacheco, Brusini et al. 2022)                                                                                                                                                                                                                                                                                                                                                                                              |
|                          |                 | Histone H1-like (chromatin)                           | (Severo, Souza et al. 2022)                                                                                                                                                                                                                                                                                                                                                                                                            |
|                          |                 | MORN, PPKL (Basal complex)                            | (Tomasina, Gonzalez et al. 2022, Yang, Doud et al. 2023)                                                                                                                                                                                                                                                                                                                                                                               |

**Table 2: Summary of all proteins localised by U-ExM using antibodies or tagged cell lines in *Toxoplasma*.**

| Organism                      | Lifecycle stage | Antibodies and tagged proteins (subcellular location) | References                    |
|-------------------------------|-----------------|-------------------------------------------------------|-------------------------------|
| <i>Cryptosporidium parvum</i> | Sporozoites     | CB1 (Crystalloid body)                                | (Guérin, Strelau et al. 2023) |
|                               |                 | ROP7 (Rhoptry)                                        | (Guérin, Strelau et al. 2023) |
|                               |                 | MIC2 (micronemes)                                     | (Guérin, Strelau et al. 2023) |
|                               |                 | DG1,2,3 & 4 (Dense granules)                          | (Guérin, Strelau et al. 2023) |
|                               |                 | SG1 & 2 (Small granules)                              | (Guérin, Strelau et al. 2023) |
|                               |                 | TSP1 (apical vesicles)                                | (John, M. Bader et al. 2023)  |
|                               | Meront          | DG2 (Dense granules)                                  | (Guérin, Strelau et al. 2023) |

**Table 3: Summary of all proteins localised by U-ExM using antibodies or tagged cell lines in *Cryptosporidium*.**

## ACKNOWLEDGEMENTS

We thank Amandine Guérin (University of Geneva) and Boris Striepen (University of Pennsylvania) who contributed images *Cryptosporidium* images to this review, Virginie Hamel, Mathieu Brochet and Paul Guichard (University of Geneva), who contributed *Plasmodium* ookinete images to this review, and Rodolpho Ornitz Oliveira Souza and Gustavo Arrizabalaga (Indiana University School of Medicine) who contributed *Toxoplasma* images to this review. We thank James Blauwkamp (Indiana University School of Medicine) for feedback on the figures and tables in this review. We thank Maria Mota, Inês Bento, Nuno Leal (IMM, Lisboa), Alexis Kaushansky, Elizabeth Glennon, and Veronica Primavera (Seattle Children's Research Institute) for the samples the liver-stage, oocyst and sporozoite images were taken from. We thank Amandine Guérin (University of Geneva) for critical reading of the *Cryptosporidium* sections of the manuscript. We thank Gautam Dey (EMBL) and Omayya Dudin (EPFL) for sharing details of about the TREC ExM project.

## COMPETING INTERESTS

The authors declare no competing interests or conflicts of interest.

## AUTHOR CONTRIBUTIONS

**Benjamin Liffner:** Conceptualization, Investigation, Writing – Original Draft, Writing – Review & Editing.  
**Sabrina Absalon:** Conceptualization, Investigation, Writing – Original Draft, Writing – Review & Editing, Supervision.

## REFERENCES

Alon, S., D. R. Goodwin, A. Sinha, A. T. Wassie, F. Chen, E. R. Daugharthy, Y. Bando, A. Kajita, A. G. Xue, K. Marrett, R. Prior, Y. Cui, A. C. Payne, C. C. Yao, H. J. Suk, R. Wang, C. J. Yu, P. Tillberg, P. Reginato, N. Pak, S. Liu, S. Punthambaker, E. P. R. Iyer, R. E. Kohman, J. A. Miller, E. S. Lein, A. Lako, N. Cullen, S. Rodig, K. Helvie, D. L. Abravanel, N. Wagle, B. E. Johnson, J. Klughammer, M. Slyper, J. Waldman, J. Jané-Valbuena, O. Rozenblatt-Rosen, A. Regev, G. M. Church, A. H. Marblestone and E. S. Boyden (2021). "Expansion sequencing: Spatially precise in situ transcriptomics in intact biological systems." Science **371**(6528).

611 Ambekar, S. V. (2022). Guardians of the *Plasmodium* Nuclear Galaxy: Identification and Characterization  
612 of *Plasmodium berghei* Nuclear Pore Proteins Ph.D., Iowa State University.

613 Antunes, A. V., M. Shahinas, C. Swale, D. C. Farhat, C. Ramakrishnan, C. Bruley, D. Cannella, C. Corrao,  
614 Y. Couté, A. B. Hehl, A. Bougdour, I. Coppens and M.-A. Hakimi (2023). "*in vitro* production of cat-  
615 restricted *Toxoplasma* pre-sexual stages by epigenetic reprogramming." bioRxiv: 2023.2001.2016.524187.

616 Araki, T., S. Kawai, S. Kakuta, H. Kobayashi, Y. Umeki, Y. Saito-Nakano, T. Sasaki, K. Nagamune, Y.  
617 Yasutomi, T. Nozaki, B. Franke-Fayard, S. M. Khan, H. Hisaeda and T. Annoura (2020). "Three-  
618 dimensional electron microscopy analysis reveals endopolygeny-like nuclear architecture segregation in  
619 *Plasmodium* oocyst development." Parasitology International **76**: 102034.

620 Atchou, K., B. M. Berger, V. Heussler and T. Ochsenreiter (2023). "Pre-gelation staining expansion  
621 microscopy (PS-ExM) for visualization of the *Plasmodium* liver stage." bioRxiv: 2023.2005.2024.542037.

622 Bertiaux, E., A. C. Balestra, L. Bournonville, V. Louvel, B. Maco, D. Soldati-Favre, M. Brochet, P.  
623 Guichard and V. Hamel (2021). "Expansion microscopy provides new insights into the cytoskeleton of  
624 malaria parasites including the conservation of a conoid." PLoS Biol **19**(3): e3001020.

625 Brusini, L., N. Dos Santos Pacheco, E. C. Tromer, D. Soldati-Favre and M. Brochet (2022). "Composition  
626 and organization of kinetochores show plasticity in apicomplexan chromosome segregation." Journal of Cell  
627 Biology **221**(9).

628 Burki, F., A. J. Roger, M. W. Brown and A. G. B. Simpson (2020). "The New Tree of Eukaryotes." Trends  
629 in Ecology & Evolution **35**(1): 43-55.

630 Calla, J., N. Mittal, G. LaMonte, B. Liffner, K. P. Godinez-Macias, K. Carolino, G. T. Walker, B. Y. Zou, E.  
631 Paytas, L. Guerra, C. Tong-Rios, B. Campo, J. M. Vinetz, D. Gamboa, M. Raffatellu, S. Absalon and E. A.  
632 Winzeler (2023). "*Plasmodium* exoerythrocytic parasites redirect trafficking of human proteins to the  
633 parasitophorous vacuole." bioRxiv: 2022.2011.2022.517223.

634 Carruthers, V. and J. C. Boothroyd (2007). "Pulling together: an integrated model of *Toxoplasma* cell  
635 invasion." Current Opinion in Microbiology **10**(1): 83-89.

636 Chen, F., P. W. Tillberg and E. S. Boyden (2015). "Expansion microscopy." Science **347**(6221): 543-548.

637 Chen, F., A. T. Wassie, A. J. Cote, A. Sinha, S. Alon, S. Asano, E. R. Daugharthy, J. B. Chang, A.  
638 Marblestone, G. M. Church, A. Raj and E. S. Boyden (2016). "Nanoscale imaging of RNA with expansion  
639 microscopy." Nat Methods **13**(8): 679-684.

640 Choudhary, H. H., M. G. Nava, B. E. Gartlan, S. Rose and S. Vinayak (2020). "A Conditional Protein  
641 Degradation System To Study Essential Gene Function in *Cryptosporidium parvum*." mBio **11**(4):  
642 10.1128/mbio.01231-01220.

643 Christoforou, A., C. M. Mulvey, L. M. Breckels, A. Geladaki, T. Hurrell, P. C. Hayward, T. Naake, L.  
644 Gatto, R. Viner, A. Martinez Arias and K. S. Lilley (2016). "A draft map of the mouse pluripotent stem cell  
645 spatial proteome." Nat Commun **7**: 8992.

646 Cowman, A. F., D. Berry and J. Baum (2012). "The cellular and molecular basis for malaria parasite  
647 invasion of the human red blood cell." Journal of Cell Biology **198**(6): 961-971.

648 Cowman, A. F., J. Healer, D. Marapana and K. Marsh (2016). "Malaria: Biology and Disease." Cell **167**(3):  
649 610-624.

650 Damstra, H. G. J., B. Mohar, M. Eddison, A. Akhmanova, L. C. Kapitein and P. W. Tillberg (2022).  
651 "Visualizing cellular and tissue ultrastructure using Ten-fold Robust Expansion Microscopy (TREx)." eLife  
652 **11**: e73775.

653 Dash, M., S. Sachdeva, A. Bansal and A. Sinha (2022). "Gametogenesis in *Plasmodium*: Delving Deeper to  
654 Connect the Dots." Frontiers in Cellular and Infection Microbiology **12**.

655 Dave, N., K. LaFavers and G. Arrizabalaga (2022). "The Dually Localized EF-Hand Domain-Containing  
656 Protein TgEFP1 Regulates the Lytic Cycle of *Toxoplasma gondii*." Cells **11**(10).

657 Del Rosario, M., J. Periz, G. Pavlou, O. Lyth, F. Latorre-Barragan, S. Das, G. S. Pall, J. F. Stortz, L.  
658 Lemgruber, J. A. Whitelaw, J. Baum, I. Tardieux and M. Meissner (2019). "Apicomplexan F-actin is  
659 required for efficient nuclear entry during host cell invasion." EMBO reports **20**(12): e48896.

660 Dos Santos Pacheco, N., L. Brusini, R. Haase, N. Tosetti, B. Maco, M. Brochet, O. Vadas and D. Soldati-  
661 Favre (2022). "Conoid extrusion regulates glideosome assembly to control motility and invasion in  
662 Apicomplexa." Nature Microbiology **7**(11): 1777-1790.

663 Dos Santos Pacheco, N., N. Tosetti, L. Koreny, R. F. Waller and D. Soldati-Favre (2020). "Evolution,  
 664 Composition, Assembly, and Function of the Conoid in Apicomplexa." Trends in Parasitology **36**(8): 688-  
 665 704.

666 Dvorin, J. D. and D. E. Goldberg (2022). "*Plasmodium* Egress Across the Parasite Life Cycle." Annual  
 667 Review of Microbiology **76**(1): 67-90.

668 Eappen, A. G., T. Li, M. Marquette, S. Chakravarty, N. Kc, G. Zanghi, B. U. Hoffman, H. Hettiarachchi, A.  
 669 Patil, Y. Abebe, C. Tran, A. A. Yossef, I. McWilliams, R. D. Morrison, A. Rathakrishnan, E. Inbar, A. S. I.  
 670 Aly, P. De La Vega, M. Belmonte, M. Sedegah, T. Wai, J. J. Campo, H. King, S. H. I. Kappe, M. Li, P. F.  
 671 Billingsley, B. K. L. Sim and S. L. Hoffman (2022). "In vitro production of infectious *Plasmodium*  
 672 *falciparum* sporozoites." Nature **612**(7940): 534-539.

673 English, E. D., A. Guérin, J. Tandel and B. Striepen (2022). "Live imaging of the *Cryptosporidium parvum*  
 674 life cycle reveals direct development of male and female gametes from type I meronts." PLOS Biology  
 675 **20**(4): e3001604.

676 Frischknecht, F. and K. Matuschewski (2017). "*Plasmodium* Sporozoite Biology." Cold Spring Harbor  
 677 Perspectives in Medicine **7**(5).

678 Gambarotto, D., F. U. Zwettler, M. Le Guennec, M. Schmidt-Cernohorska, D. Fortun, S. Borgers, J. Heine,  
 679 J. G. Schloetel, M. Reuss, M. Unser, E. S. Boyden, M. Sauer, V. Hamel and P. Guichard (2019). "Imaging  
 680 cellular ultrastructures using expansion microscopy (U-ExM)." Nat Methods **16**(1): 71-74.

681 Gerald, N., B. Mahajan and S. Kumar (2011). "Mitosis in the Human Malaria Parasite *Plasmodium*  
 682 *falciparum*." Eukaryotic Cell **10**(4): 474-482.

683 Ghosh, S. (2022) "From coast to coast and beyond." EMBLetc.

684 Gras, S., E. Jimenez-Ruiz, C. M. Klinger, K. Schneider, A. Klingl, L. Lemgruber and M. Meissner (2019).  
 685 "An endocytic-secretory cycle participates in *Toxoplasma gondii* in motility." PLoS Biol **17**(6): e3000060.

686 Gubbels, M. J., C. D. Keroack, S. Dangoudoubiyam, H. L. Worliczek, A. S. Paul, C. Bauwens, B. Elsworth,  
 687 K. Engelberg, D. K. Howe, I. Coppens and M. T. Duraisingh (2020). "Fussing About Fission: Defining  
 688 Variety Among Mainstream and Exotic Apicomplexan Cell Division Modes." Front Cell Infect Microbiol  
 689 **10**: 269.

Guérin, A., N. H. Roy, E. M. Kugler, L. Berry, J. K. Burkhardt, J.-B. Shin and B. Striepen (2021).  
 "Cryptosporidium rhoptry effector protein ROP1 injected during invasion targets the host cytoskeletal  
 modulator LMO7." Cell Host & Microbe **29**(9): 1407-1420.e1405.

Guérin, A., K. M. Strelau, K. Barylyuk, B. A. Wallbank, L. Berry, O. M. Crook, K. S. Lilley, R. F. Waller  
 and B. Striepen (2023). "*Cryptosporidium* uses multiple distinct secretory organelles to interact with and  
 modify its host cell." Cell Host & Microbe.

Guérin, A. and B. Striepen (2020). "The Biology of the Intestinal Intracellular Parasite *Cryptosporidium*."  
Cell Host & Microbe **28**(4): 509-515.

Guttery, D. S., M. Roques, A. A. Holder and R. Tewari (2015). "Commit and Transmit: Molecular Players  
 in *Plasmodium* Sexual Development and Zygote Differentiation." Trends in Parasitology **31**(12): 676-685.

Hanssen, E., C. Dekiwadia, D. T. Riglar, M. Rug, L. Lemgruber, A. F. Cowman, M. Cyrklaff, M.  
 Kudryashev, F. Frischknecht, J. Baum and S. A. Ralph (2013). "Electron tomography of *Plasmodium*  
*falciparum* merozoites reveals core cellular events that underpin erythrocyte invasion." Cellular  
Microbiology **15**(9): 1457-1472.

Hanssen, E., C. Knoechel, N. Klonis, N. Abu-Bakar, S. Deed, M. LeGros, C. Larabell and L. Tilley (2011).  
 "Cryo transmission X-ray imaging of the malaria parasite, *P. falciparum*." J Struct Biol **173**(1): 161-168.

Heo, I., D. Dutta, D. A. Schaefer, N. Iakobachvili, B. Artegiani, N. Sachs, K. E. Boonekamp, G. Bowden, A.  
 P. A. Hendrickx, R. J. L. Willems, P. J. Peters, M. W. Riggs, R. O'Connor and H. Clevers (2018).  
 "Modelling *Cryptosporidium* infection in human small intestinal and lung organoids." Nat Microbiol **3**(7):  
 814-823.

Hill, D. and J. P. Dubey (2002). "*Toxoplasma gondii*: transmission, diagnosis and prevention." Clinical  
Microbiology and Infection **8**(10): 634-640.

Jacobs, K., R. Charvat and G. Arrizabalaga (2020). "Identification of Fis1 Interactors in *Toxoplasma gondii*  
 Reveals a Novel Protein Required for Peripheral Distribution of the Mitochondrion." mBio **11**(1).

Jaskiewicz, J. J., R. D. Sandlin, A. A. Swei, G. Widmer, M. Toner and S. Tzipori (2018). "Cryopreservation  
 of infectious *Cryptosporidium parvum* oocysts." Nat Commun **9**(1): 2883.

John, A., S. M. Bader, N. Madieto Soler, K. Wiradiputri, S. Tichkule, S. T. Smyth, S. A. Ralph, A. R. Jex,  
 N. E. Scott, C. J. Tonkin and E. D. Goddard-Borger (2023). "Conservation, abundance, glycosylation

718 profile, and localization of the TSP protein family in *Cryptosporidium parvum*." Journal of Biological  
719 Chemistry **299**(3): 103006.

720 Josling, G. A. and M. Llinás (2015). "Sexual development in *Plasmodium* parasites: knowing when it's time  
721 to commit." Nature Reviews Microbiology **13**(9): 573-587.

722 Klimas, A., B. R. Gallagher, P. Wijesekara, S. Fekir, E. F. DiBernardo, Z. Cheng, D. B. Stolz, F. Cambi, S.  
723 C. Watkins, S. L. Brody, A. Horani, A. L. Barth, C. I. Moore, X. Ren and Y. Zhao (2023). "Magnify is a  
724 universal molecular anchoring strategy for expansion microscopy." Nature Biotechnology **41**(6): 858-869.

725 Lentini, G., R. Ben Chaabene, O. Vadas, C. Ramakrishnan, B. Mukherjee, V. Mehta, M. Lunghi, J.  
726 Grossmann, B. Maco, R. Visentin, A. B. Hehl, V. M. Korkhov and D. Soldati-Favre (2021). "Structural  
727 insights into an atypical secretory pathway kinase crucial for *Toxoplasma gondii* invasion." Nature  
728 Communications **12**(1): 3788.

729 Li, J., G. J. Shami, E. Cho, B. Liu, E. Hanssen, M. W. A. Dixon and L. Tilley (2022). "Repurposing the  
730 mitotic machinery to drive cellular elongation and chromatin reorganisation in *Plasmodium falciparum*  
731 gametocytes." Nat Commun **13**(1): 5054.

732 Li, L., C. Sun, Y. Sun, Z. Dong, R. Wu, X. Sun, H. Zhang, W. Jiang, Y. Zhou, X. Cen, S. Cai, H. Xia, Y.  
733 Zhu, T. Guo and K. D. Piatkevich (2022). "Spatially resolved proteomics via tissue expansion." Nature  
734 Communications **13**(1): 7242.

735 Li, Z., W. Du, J. Yang, D. H. Lai, Z. R. Lun and Q. Guo (2023). "Cryo-Electron Tomography of  
736 *Toxoplasma gondii* Indicates That the Conoid Fiber May Be Derived from Microtubules." Adv Sci (Weinh)  
737 **10**(14): e2206595.

738 Liffner, B. and S. Absalon (2021). "Expansion Microscopy Reveals *Plasmodium falciparum* Blood-Stage  
739 Parasites Undergo Anaphase with A Chromatin Bridge in the Absence of Mini-Chromosome Maintenance  
740 Complex Binding Protein." Microorganisms **9**(11): 2306.

741 Liffner, B., A. K. Cepeda Diaz, J. Blauwkamp, D. Anaguano, S. Frölich, V. Muralidharan, D. W. Wilson, J.  
742 Dvorin and S. Absalon (2023). "Atlas of *Plasmodium falciparum* intraerythrocytic development using  
743 expansion microscopy." eLife.

744 Loubens, M., C. Marinach, C.-E. Paquereau, S. Hamada, B. Hoareau-Coudert, D. Akbar, J.-F. Franetich and  
 745 O. Silvie (2023). "The claudin-like apicomplexan microneme protein is required for gliding motility and  
 746 infectivity of *Plasmodium* sporozoites." PLOS Pathogens **19**(3): e1011261.  
 747 Lourido, S. (2019). "*Toxoplasma gondii*." Trends in Parasitology **35**(11): 944-945.  
 748 Louvel, V., R. Haase, O. Mercey, M. H. Laporte, D. Soldati-Favre, V. Hamel and P. Guichard (2022).  
 749 "Nanoscopy of organelles and tissues with iterative ultrastructure expansion microscopy (iU-ExM)." bioRxiv: 2022.2011.2014.516383.  
 750  
 751 Lyons, R. E., R. McLeod and C. W. Roberts (2002). "*Toxoplasma gondii* tachyzoite–bradyzoite  
 752 interconversion." Trends in Parasitology **18**(5): 198-201.  
 753 M'Saad, O. and J. Bewersdorf (2020). "Light microscopy of proteins in their ultrastructural context." Nature  
 754 Communications **11**(1): 3850.  
 755 Mageswaran, S. K., A. Guérin, L. M. Theveny, W. D. Chen, M. Martinez, M. Lebrun, B. Striepen and Y.-  
 756 W. Chang (2021). "*In situ* ultrastructures of two evolutionarily distant apicomplexan rhoptry secretion  
 757 systems." Nature Communications **12**(1): 4983.  
 758 Martorelli Di Genova, B. and L. J. Knoll (2020). "Comparisons of the Sexual Cycles for the Coccidian  
 759 Parasites *Eimeria* and *Toxoplasma*." Frontiers in Cellular and Infection Microbiology **10**.  
 760 Matthews, H., C. W. Duffy and C. J. Merrick (2018). "Checks and balances? DNA replication and the cell  
 761 cycle in *Plasmodium*." Parasites & Vectors **11**(1): 216.  
 762 Matz, J. M. (2022). "*Plasmodium*'s bottomless pit: properties and functions of the malaria parasite's  
 763 digestive vacuole." Trends in Parasitology **38**(7): 525-543.  
 764 Montano, H., R. Anandkrishnan, V. B. Carruthers and R. Y. Gaji (2022). "TgTKL4 Is a Novel Kinase That  
 765 Plays an Important Role in *Toxoplasma* Morphology and Fitness." mSphere **0**(0): e00649-00622.  
 766 Morrisette, N. S. and L. D. Sibley (2002). "Cytoskeleton of Apicomplexan Parasites." Microbiology and  
 767 Molecular Biology Reviews **66**(1): 21-38.  
 768 Mueller, A.-K., F. Kohlhepp, C. Hammerschmidt and K. Michel (2010). "Invasion of mosquito salivary  
 769 glands by malaria parasites: Prerequisites and defense strategies." International Journal for Parasitology  
 770 **40**(11): 1229-1235.



771 Nanda, J. S. and J. R. Lorsch (2014). "Labeling a protein with fluorophores using NHS ester derivitization."  
772 Methods Enzymol **536**: 87-94.

773 Neveu, G., D. Beri and B. F. C. Kafsack (2020). "Metabolic regulation of sexual commitment in  
774 *Plasmodium falciparum*." Current Opinion in Microbiology **58**: 93-98.

775 Oliveira Souza, R. O., K. N. Jacobs, P. S. Back, P. J. Bradley and G. Arrizabalaga (2022). "IMC10 and  
776 LMF1 mediate mitochondrial morphology through mitochondrion-pellicle contact sites in *Toxoplasma*  
777 *gondii*." J Cell Sci **135**(22).

778 Pacheco, N. D. S., N. Tosetti, A. Krishnan, R. Haase, B. Maco, C. Suarez, B. Ren and D. Soldati-Favre  
779 (2021). "Revisiting the Role of *Toxoplasma gondii* ERK7 in the Maintenance and Stability of the Apical  
780 Complex." mBio **12**(5): e02057-02021.

781 Patterson, D. J. (1999). "The Diversity of Eukaryotes." Am Nat **154**(S4): S96-s124.

782 Pavlou, G., B. Touquet, L. Vigetti, P. Renesto, A. Bougdour, D. Debarre, M. Balland and I. Tardieux  
783 (2020). "Coupling Polar Adhesion with Traction, Spring, and Torque Forces Allows High-Speed Helical  
784 Migration of the Protozoan Parasite *Toxoplasma*." ACS Nano **14**(6): 7121-7139.

785 Prudêncio, M., A. Rodriguez and M. M. Mota (2006). "The silent path to thousands of merozoites: the  
786 *Plasmodium* liver stage." Nature Reviews Microbiology **4**(11): 849-856.

787 Qian, P., X. Wang, C. Guan, X. Fang, M. Cai, C.-q. Zhong, Y. Cui, Y. Li, L. Yao, H. Cui, K. Jiang and J.  
788 Yuan (2022). "Apical anchorage and stabilization of subpellicular microtubules by apical polar ring ensures  
789 *Plasmodium* ookinete infection in mosquito." Nature Communications **13**(1): 7465.

790 Qian, P., X. Wang, C.-Q. Zhong, J. Wang, M. Cai, W. Nguitragool, J. Li, H. Cui and J. Yuan (2022). "Inner  
791 membrane complex proteomics reveals a palmitoylation regulation critical for intraerythrocytic development  
792 of malaria parasite." eLife **11**: e77447.

793 Rashpa, R. and M. Brochet (2022). "Expansion microscopy of *Plasmodium* gametocytes reveals the  
794 molecular architecture of a bipartite microtubule organisation centre coordinating mitosis with axoneme  
795 assembly." PLoS Pathog **18**(1): e1010223.

796 Rashpa, R., N. Klages, D. Schwartz, C. Pasquarello and M. Brochet (2023). "The Skp1-Cullin1-FBXO1  
797 complex is a pleiotropic regulator required for the formation of gametes and motile forms in *Plasmodium*  
798 *berghei*." Nature Communications **14**(1): 1312.

799 Riglar, D. T., D. Richard, D. W. Wilson, M. J. Boyle, C. Dekiwadia, L. Turnbull, F. Angrisano, D. S.  
 800 Marapana, K. L. Rogers, C. B. Whitchurch, J. G. Beeson, A. F. Cowman, S. A. Ralph and J. Baum (2011).  
 801 "Super-resolution dissection of coordinated events during malaria parasite invasion of the human  
 802 erythrocyte." Cell Host Microbe **9**(1): 9-20.  
 803 Rudlaff, R. M., S. Kraemer, J. Marshman and J. D. Dvorin (2020). "Three-dimensional ultrastructure of  
 804 *Plasmodium falciparum* throughout cytokinesis." PLOS Pathogens **16**(6): e1008587.  
 805 Sateriale, A., J. Šlapeta, R. Baptista, J. B. Engiles, J. A. Gullicksrud, G. T. Herbert, C. F. Brooks, E. M.  
 806 Kugler, J. C. Kissinger, C. A. Hunter and B. Striepen (2019). "A Genetically Tractable, Natural Mouse  
 807 Model of Cryptosporidiosis Offers Insights into Host Protective Immunity." Cell Host Microbe **26**(1): 135-  
 808 146.e135.  
 809 Segev-Zarko, L.-a., P. D. Dahlberg, S. Y. Sun, D. M. Pelt, C. Y. Kim, E. S. Egan, J. A. Sethian, W. Chiu  
 810 and J. C. Boothroyd (2022). "Cryo-electron tomography with mixed-scale dense neural networks reveals key  
 811 steps in deployment of *Toxoplasma* invasion machinery." PNAS Nexus **1**(4).  
 812 Severo, V., R. Souza, F. Vitorino, J. Cunha, A. Ávila, G. Arrizabalaga and S. Nardelli (2022). "Previously  
 813 Unidentified Histone H1-Like Protein Is Involved in Cell Division and Ribosome Biosynthesis in  
 814 *Toxoplasma gondii*." mSphere **7**(6): e0040322.  
 815 Shaib, A. H., A. A. Chouaib, R. Chowdhury, D. Mihaylov, C. Zhang, V. Imani, S. V. Georgiev, N.  
 816 Mougios, M. Monga, S. Reshetniak, T. Mimoso, H. Chen, P. Fatehbashar zad, D. Crzan, K.-A. Saal, N.  
 817 Alawar, J. Eilts, J. Kang, L. Alvarez, C. Trenkwalder, B. Mollenhauer, T. F. Outeiro, S. Köster, J.  
 818 Preobraschenski, U. Becherer, T. Moser, E. S. Boyden, A. R. Aricescu, M. Sauer, F. Opazo and S. O.  
 819 Rizzoli (2023). "Visualizing proteins by expansion microscopy." bioRxiv: 2022.2008.2003.502284.  
 820 Sibley, L. D. (2010). "How apicomplexan parasites move in and out of cells." Current Opinion in  
 821 Biotechnology **21**(5): 592-598.  
 822 Simon, C. S., C. Funaya, J. Bauer, Y. Voß, M. Machado, A. Penning, D. Klaschka, M. Cyrklaff, J. Kim, M.  
 823 Ganter and J. Guizetti (2021). "An extended DNA-free intranuclear compartment organizes centrosome  
 824 microtubules in malaria parasites." Life Science Alliance **4**(11): e202101199.  
 825 Smith, T. G., D. Walliker and L. C. Ranford-Cartwright (2002). "Sexual differentiation and sex  
 826 determination in the Apicomplexa." Trends in Parasitology **18**(7): 315-323.

827 Sparvoli, D., J. Delabre, D. M. Penarete-Vargas, S. Kumar Mageswaran, L. M. Tsypin, J. Heckendorn, L.  
828 Theveny, M. Maynadier, M. Mendonça Cova, L. Berry-Sterkers, A. Guérin, J.-F. Dubremetz, S. Urbach, B.  
829 Striepen, A. P. Turkewitz, Y.-W. Chang and M. Lebrun (2022). "An apical membrane complex for  
830 triggering rhoptry exocytosis and invasion in *Toxoplasma*." The EMBO Journal **41**(22): e111158.  
831 Stelzer, E. H. K., F. Strobl, B.-J. Chang, F. Preusser, S. Preibisch, K. McDole and R. Fiolka (2021). "Light  
832 sheet fluorescence microscopy." Nature Reviews Methods Primers **1**(1): 73.  
833 Sun, S. Y., L.-a. Segev-Zarko, M. Chen, G. D. Pintilie, M. F. Schmid, S. J. Ludtke, J. C. Boothroyd and W.  
834 Chiu (2022). "Cryo-ET of *Toxoplasma* parasites gives subnanometer insight into tubulin-based structures."  
835 Proceedings of the National Academy of Sciences **119**(6): e2111661119.  
836 Tandel, J., E. D. English, A. Sateriale, J. A. Gullicksrud, D. P. Beiting, M. C. Sullivan, B. Pinkston and B.  
837 Striepen (2019). "Life cycle progression and sexual development of the apicomplexan parasite  
838 *Cryptosporidium parvum*." Nature Microbiology **4**(12): 2226-2236.  
839 Tenter, A. M., A. R. Heckeroth and L. M. Weiss (2000). "*Toxoplasma gondii*: from animals to humans."  
840 International Journal for Parasitology **30**(12): 1217-1258.  
841 Tomasina, R., F. C. Gonzalez, É. S. Martins-Duarte, P. Bastin, M. Gissot and M. E. Francia (2022).  
842 "Separate To Operate: the Centriole-Free Inner Core of the Centrosome Regulates the Assembly of the  
843 Intranuclear Spindle in *Toxoplasma gondii*." mBio **13**(5): e01859-01822.  
844 Tosetti, N., N. Dos Santos Pacheco, E. Bertiaux, B. Maco, L. Bournonville, V. Hamel, P. Guichard and D.  
845 Soldati-Favre (2020). "Essential function of the alveolin network in the subpellicular microtubules and  
846 conoid assembly in *Toxoplasma gondii*." eLife **9**: e56635.  
847 Truckenbrodt, S., M. Maidorn, D. Crzan, H. Wildhagen, S. Kabatas and S. O. Rizzoli (2018). "X10  
848 expansion microscopy enables 25-nm resolution on conventional microscopes." EMBO reports **19**(9):  
849 e45836.  
850 Vinayak, S., M. C. Pawlowic, A. Sateriale, C. F. Brooks, C. J. Studstill, Y. Bar-Peled, M. J. Cipriano and B.  
851 Striepen (2015). "Genetic modification of the diarrhoeal pathogen *Cryptosporidium parvum*." Nature  
852 **523**(7561): 477-480.

853 Vinetz, J. M. (2005). *Plasmodium* Ookinete Invasion of the Mosquito Midgut. Malaria: Drugs, Disease and  
854 Post-genomic Biology. R. W. Compans, M. D. Cooper, T. Honjo et al. Berlin, Heidelberg, Springer Berlin  
855 Heidelberg: 357-382.

856 Voß, Y., S. Klaus, J. Guizetti and M. Ganter (2023). "*Plasmodium* schizogony, a chronology of the  
857 parasite's cell cycle in the blood stage." PLOS Pathogens **19**(3): e1011157.

858 Voß, Y., S. Klaus, N. P. Lichti, M. Ganter and J. Guizetti (2023). "Malaria parasite centrins assemble by  
859  $\text{Ca}^{2+}$ -inducible condensation." bioRxiv: 2022.2007.2026.501452.

860 Wassie, A. T., Y. Zhao and E. S. Boyden (2019). "Expansion microscopy: principles and uses in biological  
861 research." Nature Methods **16**(1): 33-41.

862 Wilke, G., L. J. Funkhouser-Jones, Y. Wang, S. Ravindran, Q. Wang, W. L. Beatty, M. T. Baldridge, K. L.  
863 VanDussen, B. Shen, M. S. Kuhlenschmidt, T. B. Kuhlenschmidt, W. H. Witola, T. S. Stappenbeck and L.  
864 D. Sibley (2019). "A Stem-Cell-Derived Platform Enables Complete *Cryptosporidium* Development  
865 In Vitro and Genetic Tractability." Cell Host Microbe **26**(1): 123-134.e128.

866 Yang, C., E. H. Doud, E. Sampson and G. Arrizabalaga (2023). "The protein phosphatase PPKL is a key  
867 regulator of daughter parasite development in *Toxoplasma gondii*." bioRxiv: 2023.2006.2013.544803.

868 Yang, S., M. Cai, J. Huang, S. Zhang, X. Mo, K. Jiang, H. Cui and J. Yuan (2023). "EB1 decoration of  
869 microtubule lattice facilitates spindle-kinetochore lateral attachment in *Plasmodium* male gametogenesis."  
870 Nature Communications **14**(1): 2864.

871 Zeeshan, M., R. Rashpa, D. J. P. Ferguson, S. Abel, Z. Chahine, D. Brady, S. Vaughan, C. A. Moores, K. G.  
872 Le Roch, M. Brochet, A. A. Holder and R. Tewari (2022). "Genome-wide functional analysis reveals key  
873 roles for kinesins in the mammalian and mosquito stages of the malaria parasite life cycle." PLOS Biology  
874 **20**(7): e3001704.